

## **Burial of a Sarmatian Horseman in the Cemetery of a Maeotian Hillfort**

Natalja Jurjevna Limberis – Ivan Ivanovich Marchenko

In 2005 in the cemetery of the Starokorsunskaja Hillfort belonging to the Maeotian culture of the Kuban region, a rich grave of a horseman was investigated. The dead (Fig. 1) was placed into a narrow, elongated pit with rounded corners, oriented WSW–ENE. The pit was 2.97 m long and 1.05 m wide (in the middle part), the depth reached 0.30 m from the daily surface. The remains were situated on the bottom of the pit on a level of loose humus mixed with clay. The skeleton of a 30–35 years old man<sup>1</sup> lay extended on the back with the head towards WSW. The patches of black organic dust similar to rind in structure have been traced on the right of the skeleton.

Along the right side of the dead there was an iron sword with a bronze guard (1). Between the sword and the right forearm there was a curved iron knife (2). Close to it a piece of chalk (3) and a bronze ring with a clasp (4) were placed. Under the middle part of the sword's blade there were iron bits with cheek-pieces (5). In the same place fragments of two iron knives were found (6). A bronze clip (7) and a fragment of a bronze belt clasp (8) lay between humerus and the sword blade. On the lower part of the right forearm there was a golden arm ring (9). The fragment of a bronze awl lay on the knife (10).

In the filling above the right femur there was an iron dagger (11). Near the right hip a fragment of a blade belonging to a broad iron knife (12) was found. At the hand a bronze finger ring (13) and a fragment of an iron object (14) were unearthed.

At the belly (under the sacrum) pieces of harness and belt were compactly placed (Fig. 2). There were iron bits with cheek-pieces and pendants (15), nine small gilded phalerae (16), two bronze rings with clasps (17, 18) and an iron buckle. Under the bits a bronze spoon-shaped strap-end was unearthed (19). Between the phalerae and the bits there was a glass bead (20). Near the left, interior part of the pelvis an iron buckle (21) was found. Two big gilded phalerae (22, 23) lay on the left forearm.

In the filling under the right femur a silver breast phalera (24) lay. By the lower end of the left tibia, on the right side, there was a bronze buckle (25). A pebble (26) was unearthed 10 cm to the right of the skull. At the feet two pairs of iron bits with wheel-shaped cheek-pieces (27, 28) were placed.

In the SW corner of the grave pit, 20 cm above the bottom a grey wheel-made bowl (29) with a gary wheel-made jug inside (30) were found. There was a piece of chalk in the jug. In the filling of the NW part of the pit three pairs of iron bits with cheek-pieces were uncovered: near the

---

<sup>1</sup> Gender and age attribution was made by Dr. M.A. Balabanova (Volgograd State University). On the basis of craniometry data she also determined the Sarmatian racial origin of the buried.

short wall (31), in the NW corner (32) and left of the skull (33). In the filling, outside the right tibia a bronze buckle was unearthed.

During the excavation of the burial and picking up the material, the following objects were also found:

- two bronze clips (35) under the sword;
- three bronze clips (36) under the bits (5);
- pending iron strap-end (37) under the bits;
- fragment of a bronze plate (38) covering the big phalera (23);
- bronze wire object (39) in the filling to the right of the sword;
- bronze belt clamp (40) in the filling of the grave pit;
- iron arrowhead (41) under the skull;
- iron buckle (42) near the sword;
- iron ring with a clasp (43) under the bones of the right foot;
- iron carabiner (44) in the animal burrow under the sword;
- iron clamp (45) under the sword, near to the guard;
- iron ring with a clip (46) in the filling of the grave pit;
- fragment of an iron awl (47) under the breast phalera.

We can probably connect this burial with the burial of a horse made in a separate pit, situated close by (to SE). The horse grave was plundered and destroyed in ancient times.

#### Description of the grave-goods

1. Iron sword with a bronze guard (Fig. 4: 1, 1a). The blade was in a wooden scabbard, from which only fragments of dust preserved. An iron plate clamp was attached to the scabbard 52 cm from its end (Fig. 4: 3). Length: 98.6 cm.

2. Iron knife with arched blade (Fig. 5: 24). Length of the preserved part: 9 cm.

3. Piece of chalk. 4.5x2x0.3 cm.

4. Bronze ring (Fig. 5: 15) with a belt clasp. Diameter: 2x2.2 cm.

5. Two-piece iron bits with two-looped plate cheek-pieces (Fig. 5: 27, 29). Length of the bit's link: 9.4 cm, length of the cheek-pieces: 16.9 cm, 17.7 cm.

6. Fragments of two one-bladed iron knives:

a) middle part of a blade (Fig. 5: 10). Length: 5 cm.

b) lower part of a blade with sloped end (Fig. 5: 5). Length: 4.1 cm.

7. Bronze oval clamp (Fig. 5: 21b). 1.5x1.1 cm.

8. Fragment of a bronze rectangular belt clasp. 1.2x1.3 cm.

9. Golden arm ring (Fig. 3: 2) made of twisted wire. 5.4x4.7 cm, cross-section: 0.3x0.3 cm, diameter of the section at the ends: 0.35–0.45 cm.

10. Iron awl (Fig. 5: 12). Length of the preserved part: 3.2 cm.

11. Iron dagger (Fig. 5: 30) without a guard, with the remains of a wooden scabbard. The hilt was also covered with wood. Length of the preserved part: ca. 21 cm.

12. Iron knife (Fig. 5: 28) with remains of dust from the wooden sheath at the end. Length of the preserved part: ca. 10 cm.

13. Bronze finger ring (Fig. 5: 26) with wire bezel, curled in the shape of two volutes. Diameter: ca. 2.2x1.6 cm.

14. Iron object (Fig. 5: 11). Length of the preserved part: 3.2 cm.

15. Two-piece iron bits (Fig. 4: 6, 7) with additional rings and pendants. Length of the link: 9 cm.

16. Set (9 pieces) of small phalerae (Fig. 3: 3) on bronze base. The exterior surface is made in the shape of lion's head. Relieved, embossed silver foil with traces of gilding. At the reverse side a narrow bronze loop was soldered. The phalerae were filled inside with dense, fine-grained white mass. Diameter: 3.5 cm, height: 0.9 cm.

Preservation: bronze base was generally well preserved. The exterior parts of the phalerae were deformed, with large losses. Gilding can be traced as sporadic spangles and small fragments.

17. Bronze ring (Fig. 5: 14) with a belt clasp. Diameter: 2.5x2.7 cm.

18. Bronze ring (Fig. 5: 16) with a belt clasp. Diameter: 1.5 cm.

18a. Rectangular iron buckle (Fig. 5: 23) with a plate, formed by flattened closed ends. Length of the preserved part: 5.8 cm, width: 3.3 cm.

19. Bronze spoon-shaped strap-end (Fig. 5: 13). Length: 4 cm.

20. Rounded bead made of colourless glass, with gilding inside and edges around the holes. Diameter: 0.6 cm.

21. Iron buckle with round frame (Fig. 5: 8). Diameter: 3.3 cm.

22. Big phalera (Fig. 3: 4) on bronze base. The exterior is convex in the shape of "vortex" rosette, embossed of a silver foil, with traces of gilding. In the central part of the rosette there is a round glass inlay (the colour of the glass is indefinite). Three plate loops were soldered to the backside. The phalera is filled inside with dense, fine-grained white coloured mass. Diameter: 10.3 cm, height: 1.2 cm.

Preservation: edges are mostly lost, the bronze base is separated, the glass inlay is split into two parts, gilding was fragmentary preserved.

23. Big phalera (Fig. 3: 5) of the same type. Diameter: 10.3 cm, height: 1.2 cm. Preservation: edges are mostly lost, gilding was fragmentary preserved.

24. Silver breast phalera (Fig. 3: 1), in the shape of a globe segment, with small loops and rings on the edges. Diameter: 16.5 cm, height in deformed condition: 2.3–2.6 cm, height according to the graphical reconstruction: 5.1 cm.

Preservation: deliberately deformed in ancient times.

25. Bronze buckle with round frame (Fig. 5: 19). Diameter: 2x2.1 cm.

26. Pebble of yellow quartzite. 4.2x3.8x0.8–2.3 cm.

27. Two-piece iron bits (Fig. 4: 4) with wheel-shaped cheek-pieces. Length of the bit link: 10 cm, diameter of cheek-pieces: ca. 6.5 cm.

28. Two-piece iron bits (Fig. 4: 5) with wheel-shaped cheek-pieces. Length of the bit link: 9.2–9.7 cm, diameter of the cheek-pieces: ca. 6.7 cm.

29. Grey, wheel-made bowl (Fig. 4: 11) decorated with white chalk paint. Height: 8.6 cm, utmost diameter of the belly: 24 cm, diameter of the rim: 23.7 cm, diameter of the bottom: 9.4 cm.

30. Grey, wheel-made jug (Fig. 4: 12) with smoothed decoration and traces of chalk painting. Height: 18.3–18.7 cm, height of the neck: 6–6.5 cm, utmost diameter of the belly: 17 cm, diameter of the rim: 7.2 cm, diameter of the bottom: 7.3 cm. There was a piece of chalk inside: 3.2 x 2.8 x 0.9 cm.

31. Two-piece iron bits (Fig. 4: 10) with additional rings. Length of the bit link: 7.5 cm, 7.7 cm.

32. Two-piece iron bits (Fig. 4: 8) with wheel-shaped cheek-pieces. Length of the bit link: 10.2 cm, diameter of the cheek-piece: ca. 6.5 cm.

33. Iron bits (Fig. 4: 9) with cheek-pieces of the same type. The edge of the cheek-piece was inlaid with lead. It was probably the trace of a contemporary repair. Length of the bit link: ca. 10 cm, diameter of the cheek-piece: ca. 6.5 cm.
34. Bronze buckle with round frame (Fig. 5: 25). Diameter: 2x2.2 cm.
35. Bronze plate clips (Fig. 5: 21a). Diameter: 1 cm (2 pieces).
36. Bronze plate clips (Fig. 6: 20). Diameter: 1.65 cm (3 pieces).
37. Open-work pending iron strap-end (Fig. 5, 3) encrusted with bronze. Inside the clip dust from the leather belt preserved. Full length: 5.3 cm.
38. Bronze plate decoration (Fig. 5: 18) in the shape of a heraldic shield. Length: 2.7 cm.
39. Bronze object (Fig. 5: 22) consisting of two pieces of tangled wire, with volutes at the ends. Length of preserved part: 2.4 cm.
40. Bronze clasp (Fig. 5: 17) consisting of two plates. Length: 1.7 cm.
41. Three bladed, tangled iron arrowhead (Fig. 5: 41). Length: 4 cm.
42. Iron buckle with round frame (Fig. 5: 2). Diameter: 2.8–3 cm.
43. Iron ring (Fig. 5: 1) with plate. Inside the ring dust from the leather belt preserved. Diameter: 2.4 cm.
44. 8-shaped iron carabiner (Fig. 5: 7) with the fragment of a ring. Length: 3.8 cm.
45. Iron clasp (Fig. 4: 2) with traces of wooden dust – probably belonged to the scabbard of the sword. Length: 4.3 cm.
46. Iron ring (Fig. 5: 9) with a fragment of a clip. Diameter: 2.4x2.6 cm.
47. Sharp pointed iron awl (Fig. 5: 4). Length of the preserved part: 2.8 cm.

### Analysis

The burial inventory is rather diverse and impressive. A range of objects (weapons, belt details, harness and harness decorations) make us compare this burial with rich Sarmatian assemblages, dated in the frames of the first centuries AD.

The bronze guard of the sword coming from the grave has got a rhomboid-shaped section, with an excision on the upper part and a central ledge at the bottom. V.E. MASLOV (1999. 221) proposed to divide swords with bronze guards into two groups based on the shape of the guard: the one including the guards related to the nephrite pieces (with an excision on the upper part and central ledge at the bottom) and another one including straight guards with rhomboid section and without central ledge. A.S. SKRIPKIN thought that the division in two groups based on the shape of the guard is not really relevant, because all such swords, regardless of the material of their guards, go back to a single tradition of manufacture (SKRIPKIN 2000. 18.).

Long swords with short rhomboid-shaped guards made of bronze, iron or nephrite and with long spike for the hilt are known from Sarmatian sites of the steppes between Volga and Don and at adjoining territories (MAXIMENKO–BEZUGLOV 1987. Fig. 2, MASLOV 1999. 221, SKRIPKIN 2000. Fig. 1, Fig. 2, BEZUGLOV 2000. Fig. 4: 1, 3). The most complete list of swords of this type is published in the paper by A.S. SKRIPKIN (2000. 18, 31). The author connected their spread in Sarmatian environment with Eastern (Chinese) innovations. He dated the earliest swords in Sarmatian burials to the 2<sup>nd</sup>–1<sup>st</sup> cent. BC, and the latest ones to the 2<sup>nd</sup>–3<sup>rd</sup> cent. AD. (SKRIPKIN 2000. 20). S.I. BEZUGLOV (2000. 176) in his paper devoted to the Late Sarmatian long swords from the Don area, including those with rhomboid-shaped guards, mentioned that the prototypes of the swords with similar guards were, with no doubt, objects of Chinese production. The spikes of Sarmatian long swords have rectangular section and a clincher at the upper part (BEZUGLOV 2000. 171). Swords with similar bronze guards

are very rare finds for Kuban area. We know only one such sword from a barrow near stanica Dinskaja (excavated by E.A. Jarkovaja in 1973). This Sarmatian assemblage was dated to the 1<sup>st</sup> cent. BC. Due to the bad preservation of blade fragments and poor field records, the sword was determined as a short one (MARCHENKO 1996. 56. Fig. 96: 2). However, it is quite possible that the sword from Dinskaja could also be a long one.

The weapon belt clamp in the shape of a simple loop, attached vertically to the scabbard, is typical for long swords. A similar clamp which belonged to the sword of the type in question, but without a guard, was found in a burial of the second half of the 2<sup>nd</sup> cent. AD in the Kobjakovo barrow cemetery (GUGUEV–BEZUGLOV 1990. 170, 173, Fig. 2: 1, 3).

There were 7 pairs of bits with cheek-pieces placed into the grave. Four pairs had wheel-shaped cheek-pieces. Judging from the diameter of cheek-pieces (6.5–6.7 cm) they belong to variant “b”. Three pairs had spokes weld-in directly to the wheel, one pair had spokes weld-in to the edge. Earlier it was considered that this method of joining spokes and the edge (welding-in with edge) is characteristic only for earlier variant “a”, which was dated to the 1<sup>st</sup> cent. BC (MARCHENKO 1996. 75, 76). Bits with wheel-shaped cheek-pieces of variant “b” occur not only in the Kuban area, but also at the sites of European and Asian Sarmatia and date to 1<sup>st</sup> – first half of the 3<sup>rd</sup> cent. AD (MARCHENKO 1996. 76).

One pair of bits lay close to the plate cheek-pieces with welded rectangular loops. Iron plate cheek-pieces close in shape, but with an 8-shaped widening in the middle part, come from Ust’-Lbinskaja, barrow 31, which, according to fibula found here, can be dated to the second half of the 1<sup>st</sup> – first half of the 2<sup>nd</sup> cent. AD. From the same assemblage we know bits with additional rings (GUSHCHINA–ZASECKAJA 1994. 65, Pl. 40, Cat. 363, 367, 368).

The 8-shaped iron carabiner with the remains of a loop should be included into the elements of horse harness. Near to it bits were found. A similar carabiner, fixed on the ring of a bit with looped cheek-pieces is known from barrow 6 found near Tiflisskaja (1908), dated to the second half of the 1<sup>st</sup>–2<sup>nd</sup> cent. AD. (GUSHCHINA–ZASECKAJA 1994. 37, note 10. Pl. 56, Cat. 555). Carabiners of the same type, including pieces made of gold, are also known in other Sarmatian assemblages of the 1<sup>st</sup> cent. AD (SIMONENKO–LOBAJ 1991. Fig. 13: 6).

We do not know analogies for the big (shoulder) phalera from Starokorsunskaja, though representations of “vortex” rosette on phalerae occurred already in the 3<sup>rd</sup>–2<sup>nd</sup> cent. BC. (MORDVINCEVA 2001. 73, 74, Pl. 9: 20, 21, Pl. 11: 28). Representations of “vortex” rosettes stylistically close to the type in question can be found on small phalerae from Sarmatian sites. Identical phalerae came from the flat burial of the 1<sup>st</sup> – early-2<sup>nd</sup> cent. AD, near village Komsomol’skij (DVORNICHENKO–PLAHOV–SERGACKOV 2002. 226, 232, Fig. 3: 6) and grave 1, barrow 64 of cemetery “Carskij”, belonging to the second half of the 1<sup>st</sup> – early-2<sup>nd</sup> cent. AD (VLASKIN 1990. 64, 65, 68, Fig. 1: 7). These phalerae differ from the Starokorsunskaja piece by small size (3–4 cm) and iron base, covered with golden foil.

The breast phalera has analogies in Sarmatian assemblages in the south of Eastern Europe. Silver phalerae of the same type from Olbia and village Grushka differ from the Starokorsunskaja piece only by the existence of three loops used for fixing (SIMONENKO 2004. 204–206, Fig. 4: 1, 2). The burial from Grushka dates to the second half of the 1<sup>st</sup> – early-2<sup>nd</sup> cent. AD (GROSU 1986. 259–261, Fig. 1: 24).

Small phalerae in the shape of lion mask still have not got close analogies. The style and size of the image is similar to the decorative plate from Olbia, which, according to A.V. SIMONENKO (2004. 207, 208, Fig. 5), can be dated to the 1<sup>st</sup> cent. AD. Stylistically different golden phalerae from barrow 10 of the Kobjakovo cemetery have bronze base and glass inlays of glass-like paste not only at the place of the eyes, but also above the forehead (THE TREASURES OF NOMADIC TRIBES... 1991. Cat.

134). The grave dates to the end of the 1<sup>st</sup> – early-2<sup>nd</sup> cent. AD. (PROHOROVA–GUGUEV 1992. 159). Inlays in the places of the eyes also bring together the golden plate from the cemetery of Gorgippia (tomb 2, sarcophagus 2) and phalerae from Starokorsunskaja. On the basis of a bow shaped fibula the assemblage from Gorgippia was put to the 2<sup>nd</sup> – mid-3<sup>rd</sup> cent. AD (TREASURES 1991. Cat. 182, 184) – overdated in our view.

The belt was put into the grave together with the bridle set. Under bits no. 15 there were bronze and iron strap-ends of pending belts, and near the small phalerae lay rings with belt clasps.

Bronze spoon-shaped strap-ends from additional belts of different types are often represented in Sarmatian sites of the second half of the 1<sup>st</sup> – early-2<sup>nd</sup> cent. AD in Northwest Pontic region and the Volga–Ural area (SIMONENKO–LOBAJ 1991. 23, 60, Fig. 13: 1, 2, Fig. 27: 5, 6, OTCHIR–GORIAEVA 2002. Fig. 11). Iron strap-ends are known in the assemblages of the Central Cis-Caucasus. Grave 49/1 of the Podkumskij cemetery has a “narrow” dating and, judging from the set of bow shaped fibulas, belongs to the second half the 1<sup>st</sup> cent. AD (ABRAMOVA 1987. 92, Fig. 45: 1–3, 12, 13, Fig. 46: 12–14, ABRAMOVA 1993. Fig. 57: 41, 42). The closest analogies for the shape of the bronze strap-end from Starokorsunskaja come from Middle-Sarmatian burials of the left bank of Don (ILJUKOV–VLASKIN 1992. 230, Fig. 3: 3, Fig. 30: 14). So, the most probable date for the spoon-shaped strap-ends is the second half of the 1<sup>st</sup> – early-2<sup>nd</sup> cent. AD. They do not occur in later assemblages.

We do not know exact analogies for the two-piece iron strap-end encrusted with bronze. V.Ju. Malashev believes that two-piece pending strap-ends of type N1 (to which our example belongs) obviously originate from strap-ends without clasps, which are analogous to the examples from barrow 19 of the Sladkovskij cemetery. According to him two-piece pending strap-ends appeared not earlier than the second half of the 2<sup>nd</sup> cent. AD and continued to be used in the first half of the 3<sup>rd</sup> cent. BC (MALASHEV 2000. 199, 200, Fig. 1, 2). He considers the two-piece iron strap-end from grave 77 of the Nizhnij Dzhulat cemetery as the earliest example. In our opinion, it is unlikely that the strap-end from Nizhnij Dzhulat belongs to the same type, because it has not got a clip as V.Ju. Malashev himself mentions. An iron strap-end with a similar system of fixing occurred from grave 49/1 of the second half of the 1<sup>st</sup> cent. AD in the Podkumskij cemetery (ABRAMOVA 1987. Fig. 45: 19).

The closest shape parallels of the Starokorsunskaja strap-end are the golden pending strap-ends from the grave of the second half of the 1<sup>st</sup> cent. AD found in Porogi (SIMONENKO–LOBAJ 1991. Fig. 11: 3, 4). V.Ju. Malashev was right saying that metal carabiners evidently appeared synchronously with metal plates on buckles and then widely spread starting from the second half – late-2<sup>nd</sup> cent. (MALASHEV 2000. 209). But if the clasps on the strap-ends are synchronous with the buckles with plates, then the time of appearance of pending strap-ends with clasps cannot be limited only to the second half of the 2<sup>nd</sup> cent. AD, because the buckles with mobile plate appeared considerably earlier. Thus, in graves 13/2 and 13/2 of the Podkumskij cemetery, the buckles with mobile plate occurred together with plate and bow shaped fibulae and mirror-pendants with high conical umbo (ABRAMOVA 1987. 92, Fig. 21: 7, 9, Fig. 22: 15, 18, 25–27). Grave 14/2 was dated to the turn of the 1<sup>st</sup>/2<sup>nd</sup> – early-2<sup>nd</sup> cent. AD (ABRAMOVA 1987. 108). Later M.P. Abramova attributed these burials to the group of graves belonging to the 1<sup>st</sup> – early-2<sup>nd</sup> cent. AD (ABRAMOVA 1993. Fig. 58: 16–20). Taking into consideration the chronology of the fibulae and buckles from the assemblages in question, they should be dated to the second half of the 1<sup>st</sup> – early-2<sup>nd</sup> cent. AD. In connection with this we may suppose that pending strap-ends with clasps could have appeared in the second half of the 1<sup>st</sup> – early-2<sup>nd</sup> cent. AD.

Frames of bronze buckles without plates (nos. 25, 34) were not cast-in-block, but made of round rod with ends flattened and fastened together by bronze rivets. Analogous buckles come from grave 1, barrow 64 of the “Carskij” cemetery, where plates with “vortex” rosette also have been found (VLASKIN 1990. 65, 68, Fig. 1: 2, 3, 7).

Objects made of intertwined bronze wires with loops, simple ring-shaped clips and clasps consisting of two plates have been found in Sarmatian assemblages with spoon-shaped strap-ends (ABRAMOVA 1987. Fig. 45: 4, 6, 11, ILJUKOV–VLASKIN 1992. Fig. 3: 5–7, 10, 17–19, Fig. 30: 4–6) and in the catacomb graves of the Golden Cemetery, belonging to the second chronological group (GUSHCHINA–ZASECKAJA 1994. 37, note 10, Pl. 19, Cat. 182/2, Pl. 23, Cat. 217, Pl. 25, Cat. 243/2, Pl. 26, Cat. 259, Pl. 32, Cat. 301/3, 5 etc.). The objects made of twisted wire were found in the Avilovskij II cemetery in barrow 11, as part of a 1<sup>st</sup> cent. AD assemblage, together with a dipper of type 140 by Eggers and with a cauldron of Debelt type (SERGACKOV 2000. 121–123, 167, Fig. 104: 1, 3, 4).

Shapes of the vessels (bowl and jug) are characteristic for the Maeotian grey wheel-made pottery of the 1<sup>st</sup>–2<sup>nd</sup> cent. AD. It is also quite typical for the period to decorate pottery with chalk bands. This tradition was traced in the grave materials from the cemetery of Starokorsunskaja Hillfort 2.

It seems that the most probable date for the burial of the Sarmatian horseman appears to be the second half of the 1<sup>st</sup> – early-2<sup>nd</sup> cent. AD. This peculiar assemblage reflects close economical and political connections between the local settled population and the nomads of the steppe.

### References

ABRAMOVA 1987.

Мая Павловна Абрамова: Подкумский могильник. „Наука”, Москва 1987.

ABRAMOVA 1993.

Мая Павловна Абрамова: Центральное Предкавказье в сарматское время (III в. до н.э. – IV в. н.э.). [Central Ciscaucasia (Predkavkaz'e) in the Sarmatian Period (3<sup>rd</sup> century B.C. – 4<sup>th</sup> century A.D.)] Институт археологии РАН, Москва 1993.

BEZUGLOV 2000.

Сергей Иванович Безуглов: Позднесарматские мечи (по материалам Подонья). [Late Sarmatian swords.]. In: Сарматы и их соседи на Дону. Материалы и исследования по археологии Дона. Вып. 1. Отв. ред. Ю.К. Гугуев. Terra Publishers, Ростов-на-Дону 2000. 169–193., 315–316.

DVORNICHENKO–ПЛАХОВ–SERGACKOV 2002.

Владимир Васильевич Дворниченко – Вячеслав Васильевич Плахов – Игорь Викторович Сергацков: Сарматские погребения у поселка Комсомольский Астраханской области. *Нижеволжский археологический вестник* вып. 5. 2002. 224–250.

GROSU 1986.

Василий Иванович Гросу: Сарматское погребение в Поднестровье. *СА* 1986: 1. 258–261.

GUGUEV–BEZUGLOV 1990.

Владимир Константинович Гугуев – Сергей Иванович Безуглов: Всадническое погребение первых веков нашей эры из курганного некрополя Кобякова городища на Дону. [A knight burial of the early centuries A.D. from the kurgan necropolis of the Kobyakovo fortified settlement on the Don.] *СА* 1990: 2. 164–175.

GUSHCHINA–ZASECKAJA 1994.

Ирина Ивановна Гущина – Ирина Петровна Засецкая: „Золотое кладбище” Римской эпохи в Прикубанье. [„Golden cemetery” of the Roman Age in the Kuban' basin.] Изд. „Фарн”, Санкт-Петербург 1994.

ILJUKOV–VLASKIN 1992.

Леонид Сергеевич Ильюков – Михаил Васильевич Власкин: Сарматы междуречья Сала и Маныча. Издательство Ростовского университета. Ростов-на-Дону 1992.

MALASHEV 2000.

Владимир Юрьевич Малашев: Периодизация ременных гарнитур позднесарматского времени. [The Periodization of Belt Sets of the Late Sarmatian Period.] In: Сарматы и их соседи на Дону. Материалы и исследования по археологии Дона. Вып. 1. Отв. ред. Ю.К. Гугуев. Terra Publishers, Ростов-на-Дону 2000. 194–232., 316–318.

MARCHENKO 1996.

Иван Иванович Марченко: Сираки Кубани. Кубанский государственный университет, Краснодар 1996.

MASLOV 1999.

1. Владимир Евгеньевич Маслов: О датировке изображений на поясных пластинах из Орлатского могильника. In: Евразийские древности. 100 лет Б.Н. Гракову: архивные материалы, публикации, статьи. Отв. ред. А.И. Мелюкова – М.Г. Мошкова – В.А. Башилов. Институт археологии РАН, Москва 1999. 219–236.

MAXIMENKO–BEZUGLOV 1987.

Владимир Евгеньевич Максименко – Сергей Иванович Безуглов: Позднесарматские погребения в курганах на реке Быстрой. [Late Sarmatian Burials in the Mounds along the Vystraya River.] *СА* 1987: 1. 183–192.

MORDVINCEVA 2001.

Valentina Mordvinceva: Sarmatische Phaleren. [Summary. Резюме.] *Archäologie in Eurasien*. Band 11. Verlag Marie Leidorf, Rahden 2001.

OTCHIR-GORIAEVA 2002.

Maria Otchir-Goriaeva: Das Sarmatische Grab von Jaškul', Kalmykien. *EurAnt* 8. 2002. 353–387.

PROKHOROVA–GUGUEV 1992.

1. Татьяна Александровна Прохорова – Владимир Константинович Гугуев: Богатое сарматское погребение в кургане 10 Кобяковского могильника. [A rich Sarmatian burial in the kurgan 10 of Kobyakovo cemetery.] *СА* 1992: 1. 142–161.

SERGACKOV 2000.

Игорь Викторович Сергацков: Сарматские курганы на Иловле. Издательство Волгоградского университета, Волгоград 2000.

SIMONENKO 2004.

Aleksandr Vladimirovič Simonenko: Eine sarmatische Bestattung mit Tamga-Zeichen im Gebiet Olbias. *EurAnt* 10. 2004. 199–227.

SIMONENKO–LOBAJ 1991.

Александр Владимирович Симоненко – Борис Иванович Лобай: Сарматы Северо-Западного Причерноморья в I в. н.э. (погребения знати у с. Пороги). Киев 1991.

SKRIPKIN 2000.

Анатолий Степанович Скрипкин: Новые аспекты в изучении истории материальной культуры сарматов. [New aspects in the investigation of the history of Sarmatian material culture.] *Нижевольтский археологический вестник* вып. 3. 2000. 17–40.

TREASURES 1991.

The Treasures of Nomadic Tribes in South Russia. Ancient Orient Museum, Tokyo 1991.

VLASKIN 1990.

Михаил Васильевич Власкин: Уздечный набор с тамгообразными псалями из могильника «Царского». In: Историко-археологические исследования в г. Азове и на Нижнем Дону в 1989 г. Вып. 9. Отв. ред. В.Е. Максименко. Азов 1990. 64–68.

Natalja Jurjevna LIMBERIS – Ivan Ivanovich MARCHENKO

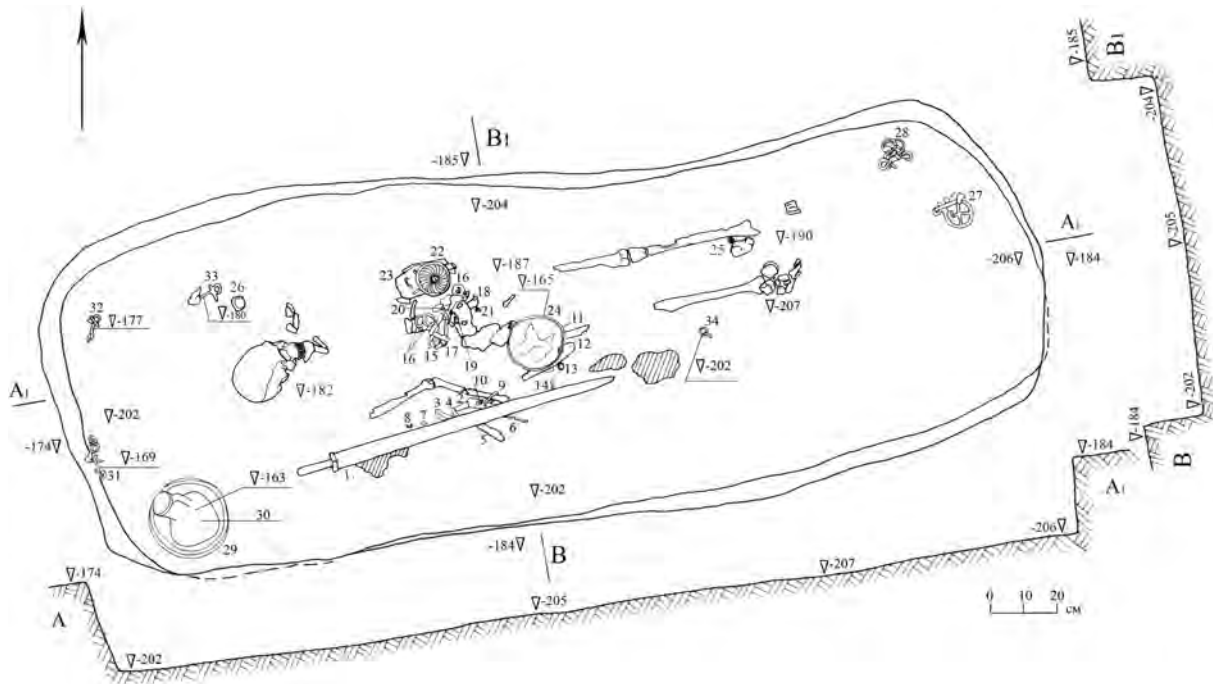
Kuban State University  
Department of Archaeology, Ethnology, Ancient and Medieval History  
350040 Krasnodar  
ul. Stavropolskaja 149.  
Russia  
e-mail: meot@mail.ru

### **Szarmata lovas sírja egy meót földvár temetőjében**

2005-ben a Sztarokorszunszkaja-2 földvár (gorogyiscse) kutatása során talált Kubán-vidéki meót temetőben gazdag lovas sírját tárták fel. A sírmellékletek igen változatosak és jelentősek. Egy sor itt előkerült lelet (bronz kereszttaggal ellátott hosszú vaskard, övveretek, lószerszám és díszítései) a temetkezést a Kr. u. első századokra keltezett gazdag szarmata együttesekkel rokonítja. A tárgyak alapján a sírt az I. sz. második felére – a II. elejére keltezzük. A szokatlan együttes szoros gazdasági és politikai kapcsolatokra utal a helyi letelepedett népesség és a nomádok között.

Natalja Jurjevna LIMBERISZ – Ivan Ivanovics MARCSENKO

Кубанский государственный университет  
Кафедра археологии, этнологии, древней и средневековой истории  
350040 Краснодар  
ул.Ставропольская 149.  
Россия  
e-mail: meot@mail.ru



**Fig. 1**

Grave of a Sarmatian horseman in the cemetery of the Starokorsunskaja Hillfort 2. 1: sword, 2: knife, 3: chalk, 4: ring with a clasp, 5: bits with cheek-pieces, 6: fragments of knives, 7: clip, 8: fragment of a clasp, 9: arm ring, 10: awl, 11: dagger, 12: knife, 13: finger ring; 14: fragment of an unidentified object, 15: bits with cheek-pieces, 16: small phalerae, 17–18: rings with a clasp, 19: spoon-shaped strap-end, 20: bead, 21: buckle, 22–23: big phalerae, 24: breast phalera, 25: buckle, 26: pebble, 27–28: bits with cheek-pieces, 29: grey wheel-made bowl, 30: grey wheel-made jug, 31–33: bits with cheek-pieces, 34: buckle

**1. kép**

Szarmata lovas sírja a Sztarokorszunskaja-2 földvár temetőjében 1: kard, 2: kés, 3: kréta, 4: szorító gyűrű, 5: zablapálcás zablá, 6: kések töredékei, 7: pánt, 8: szorító töredéke, 9: karperec, 10: ár, 11: tőr, 12: kés, 13: gyűrű, 14: ismeretlen rendeltetésű tárgy töredéke, 15: zablapálcás zablá, 16: kis falerák, 17–18: szorító gyűrűk, 19: kanál alakú szíjvég, 20: gyöngy, 21: csat, 22–23: nagy falerák, 24: szügyelő falera, 25: csat, 26: kavics, 27–28: zablapálcás zablák, 29: szürke korongolt tál, 30: szürke korongolt korsó, 31–33: zablapálcás zablák, 34: csat

**Fig. 2**

Starokorsunskaja Hillfort 2: group of grave-goods *in situ* 15: bits with cheek-pieces (iron), 16: small phalerae (bronze, silver), 17: ring with a clasp (bronze), 18: ring with a clasp (bronze), 19: spoon-shaped strap-end (bronze), 20: bead (glass), 21: buckle (iron), 22–23: big phalerae (bronze, silver, glass)

**2. kép**

Sztarokorszunskaja-2: *in situ* leletegyüttes a sírban 15: zablapálcás zablá (vas), 16: kis falerák (bronz, ezüst), 17: szorító karika (bronz), 19: kanál alakú szíjvég (bronz), 20: gyöngy (üveg), 21: csat (vas), 22–23: nagy falerák (bronz, ezüst, üveg)

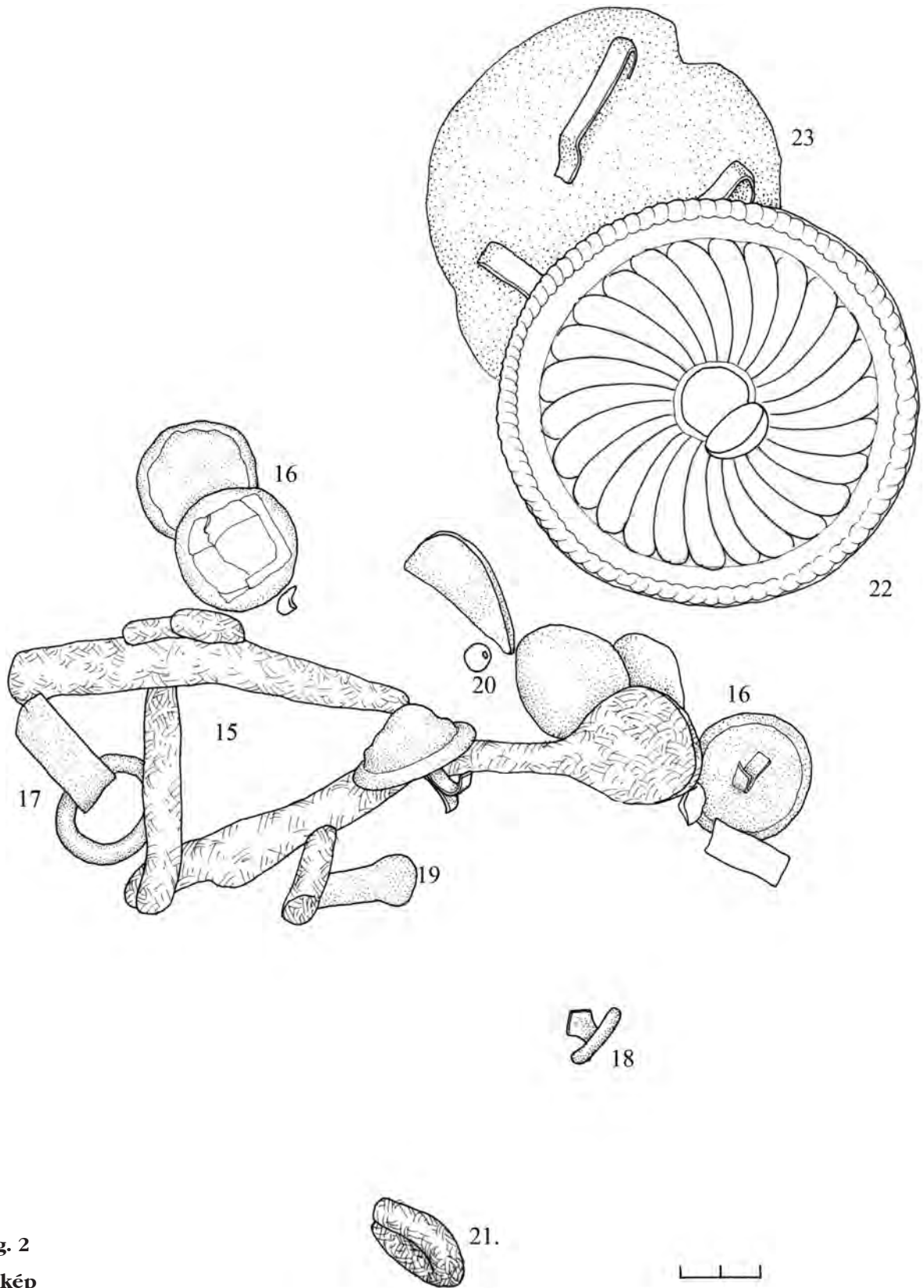


Fig. 2  
2. kép

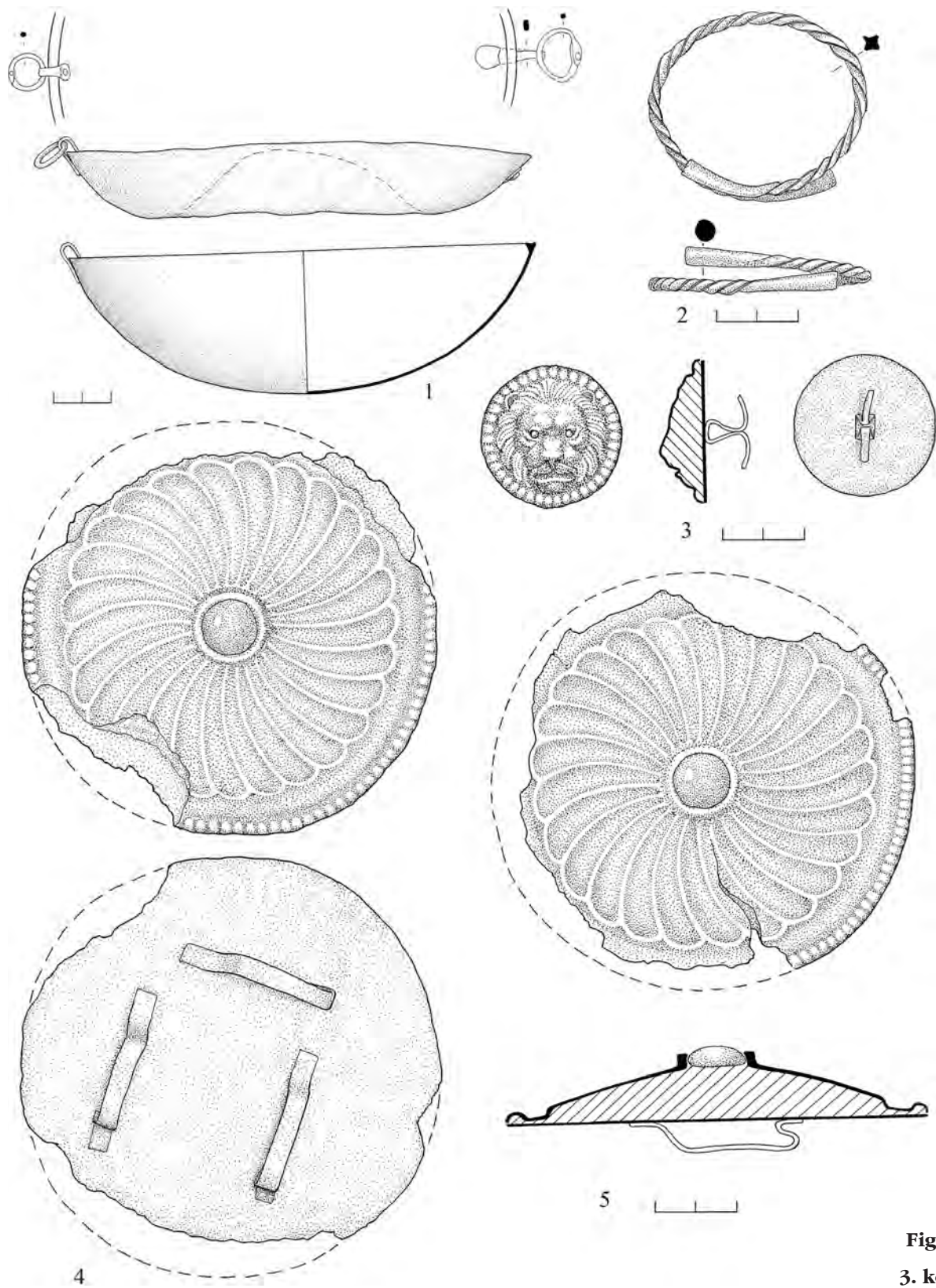


Fig. 3  
3. kép

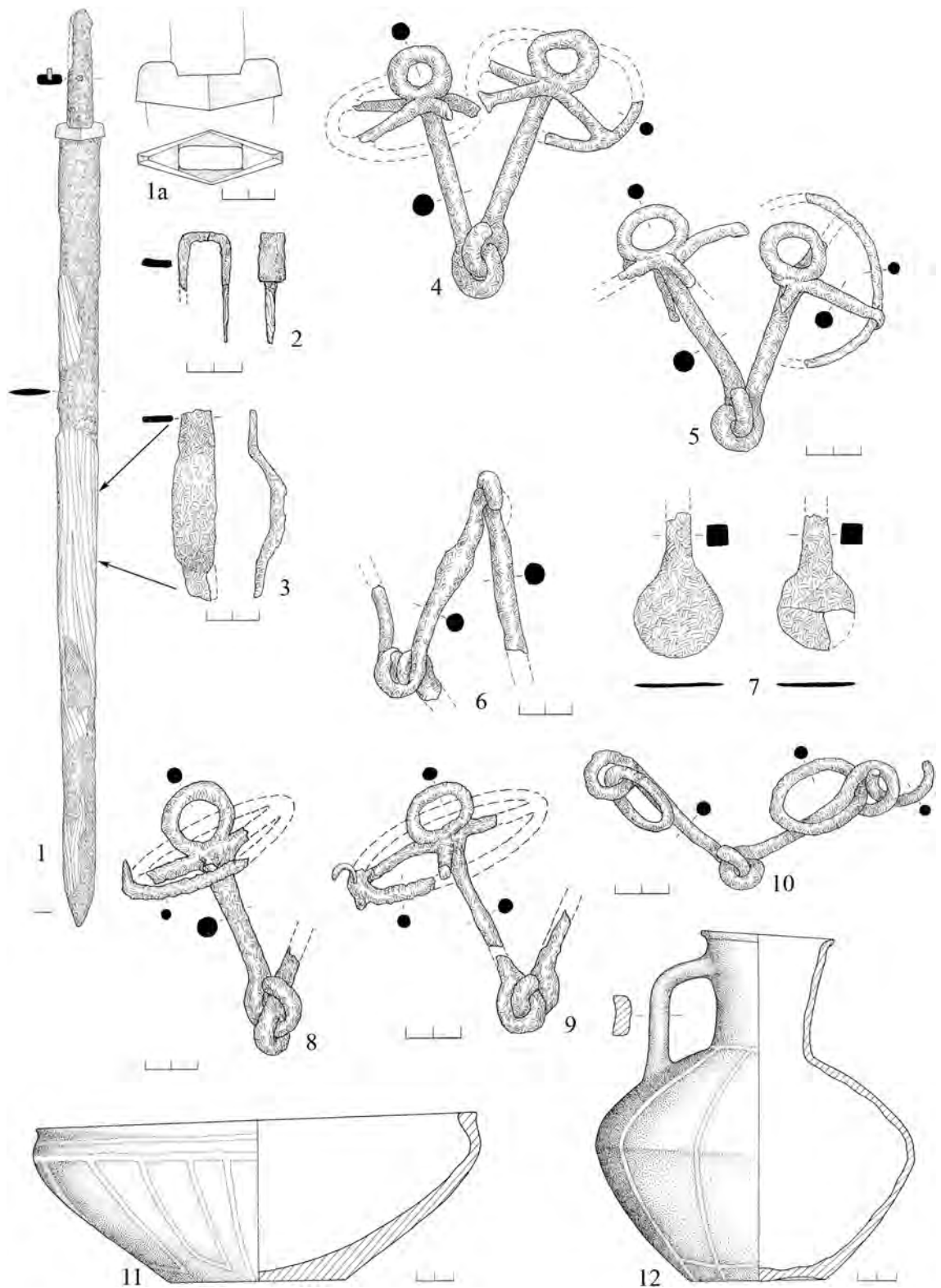


Fig. 4  
5. kép

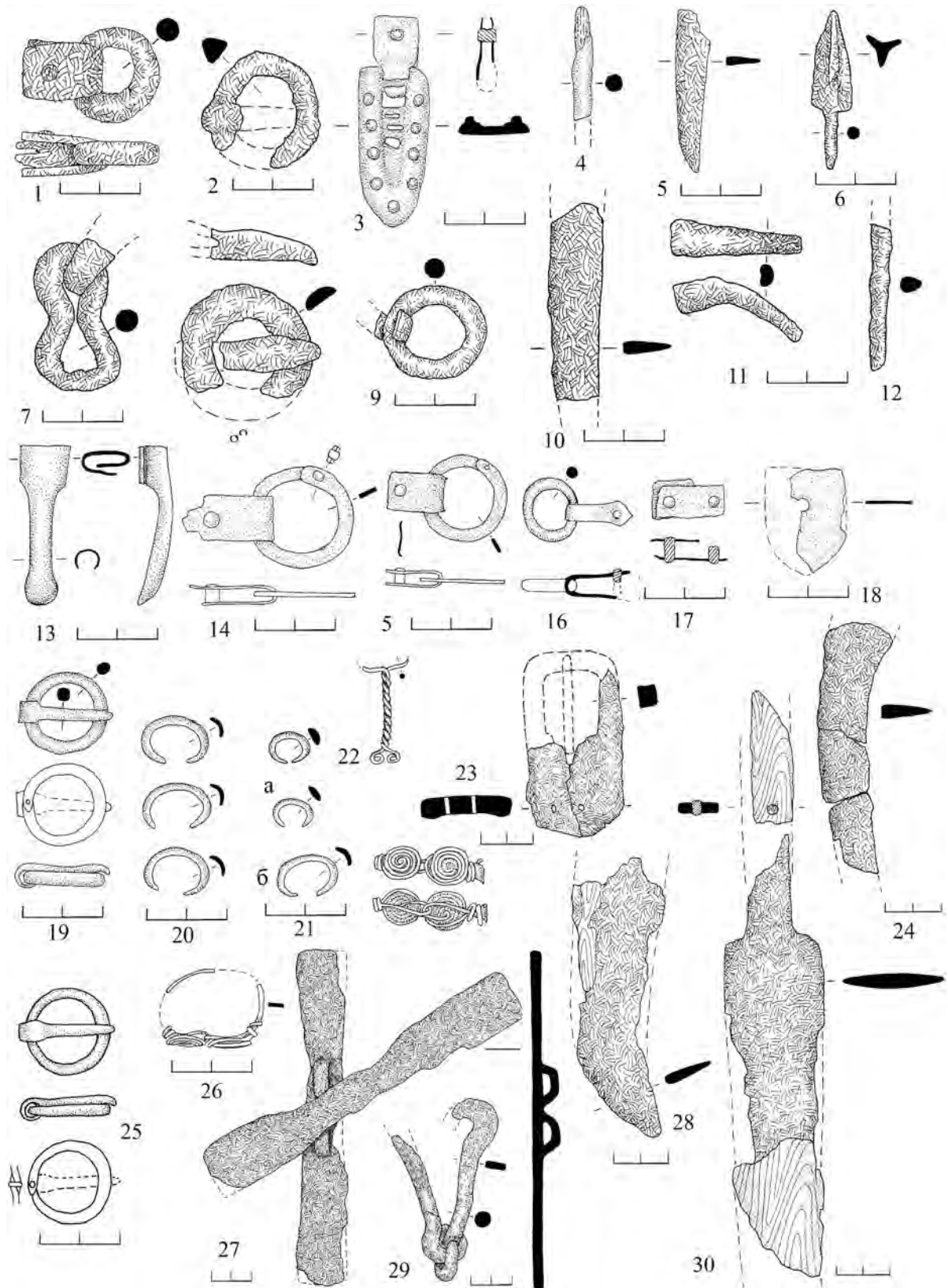


Fig. 5  
5. kép

**Fig. 3**

Starokorsunskaja Hillfort 2 1: breast phalera (24, silver), 2: arm ring (9, gold), 3: small phalera (16, silver, bronze, glass, paste), 4–5: big phalerae (23–24, silver, bronze, glass, paste)

**3. kép**

Sztarokorsunskaja-2 1: szügyelő falera (24, ezüst), 2: karperec (9, arany), 3: kis falera (16, ezüst, bronz, üveg, paszta), 4–5: nagy falerák (23–24, ezüst, bronz, üveg, paszta)

**Fig. 4**

Starokorsunskaja Hillfort 2 1: sword (iron, bronze), 1a: guard of the sword (bronze), 2–3: belt clamps from the scabbard of a sword (iron), 4–6: bits with cheek-pieces (27–28, 15, iron), 7: parts of cheek-pieces (15, iron), 8–9: bits with cheek-pieces (32–33, iron), 10: bits with additional rings (31, iron), 11: bowl (29, grey clay), 12: jug (30, grey clay)

**4. kép**

Sztarokorsunskaja-2 1: kard (vas, bronz), 1a: kardellenző (bronze), 2–3: kardhüvely függesztői (vas), 4–6: zablapálcás zablák (27–28, 15, vas), 7: zablapálcák töredéke (15, vas), 8–9: zablapálcás zablák (32–33, vas), 10: karikás zabla (31, vas), 11: tál (29, szürke kerámia), 12: korsó (30, szürke kerámia)

**Fig. 5**

Starokorsunskaja Hillfort 2 1: ring with clasp (43, iron), 2: buckle (42, iron), 3: pending strap-end (37, iron, bronze), 4: fragment of an awl (47, iron), 5: fragment of a knife (6b, iron), 6: arrowhead (41, iron), 7: carabiner (44, iron), 8: buckle (21, iron), 9: ring with clasp (46, iron), 10: fragment of a knife (6a, iron), 11: fragment of an unidentified object (14, iron), 12: fragment of an awl (10, iron), 13: spoon-shaped strap-end (19, bronze), 14–16: rings with clasp (17, 4, 18, bronze), 17: clasp (40, bronze), 18: fragment of a decorative plate (38, bronze), 19: buckle (25, bronze), 20–21b: clips (36, 35, 7, bronze), 22: wire object (39, bronze), 23: buckle (18a, iron), 24: fragment of a knife (2, iron), 25: buckle (34, bronze), 26: finger ring (13, bronze), 27: cheek-pieces (5, iron), 28: fragment of a knife (12, iron), 29: bits (5, iron), 30: fragments of a dagger (11, iron)

**5. kép**

Sztarokorsunskaja-2 1: szorító karika (43, vas), 2: csat (42, vas), 3: csüngős szíjvég (37, vas, bronz), 4: ártöredék (47, vas), 5: késtöredék (6b, vas), 6: nyílhegy (41, vas), 7: karabiner (44, vas), 8: csat (21, vas), 9: szorító karika (46, vas), 10: késtöredék (6a, vas), 11: ismeretlen rendeltetésű tárgy töredéke (14, vas), 12: ártöredék (10, vas), 13: kanál alakú szíjvég (19, bronz), 14–16: szorító karikák (17, 4, 18, bronz), 17: szorító (40, bronz), 18: lemeztöredéke (38, bronz), 19: csat (25, bronz), 20–21b: pántok (36, 35, 7, bronz), 22: dróttárgy (39, bronz), 23: csat (18a, vas), 24: késtöredék (2, vas), 25: csat (34, bronz), 26: gyűrű (13, bronz), 27: zablapálcák (5, vas), 28: késtöredék (12, vas), 29: zabla (5, vas), 30: tőr töredékei (11, vas)

