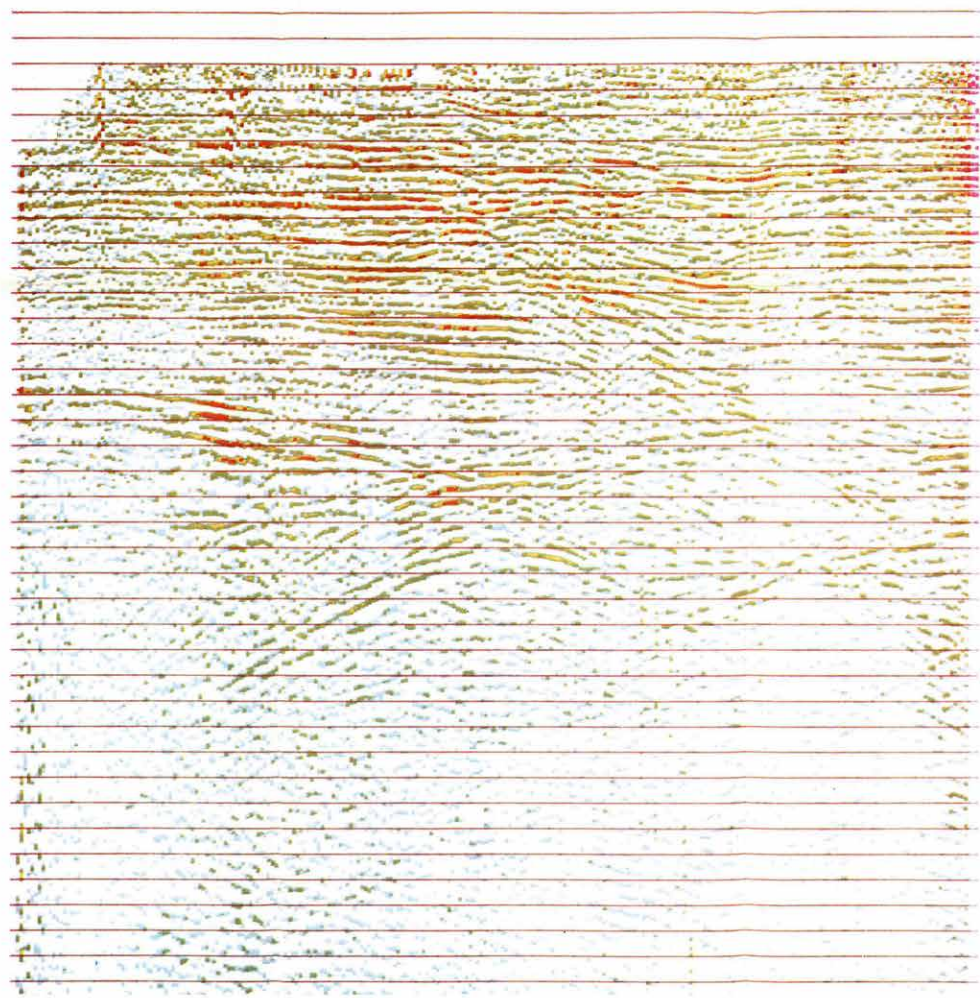
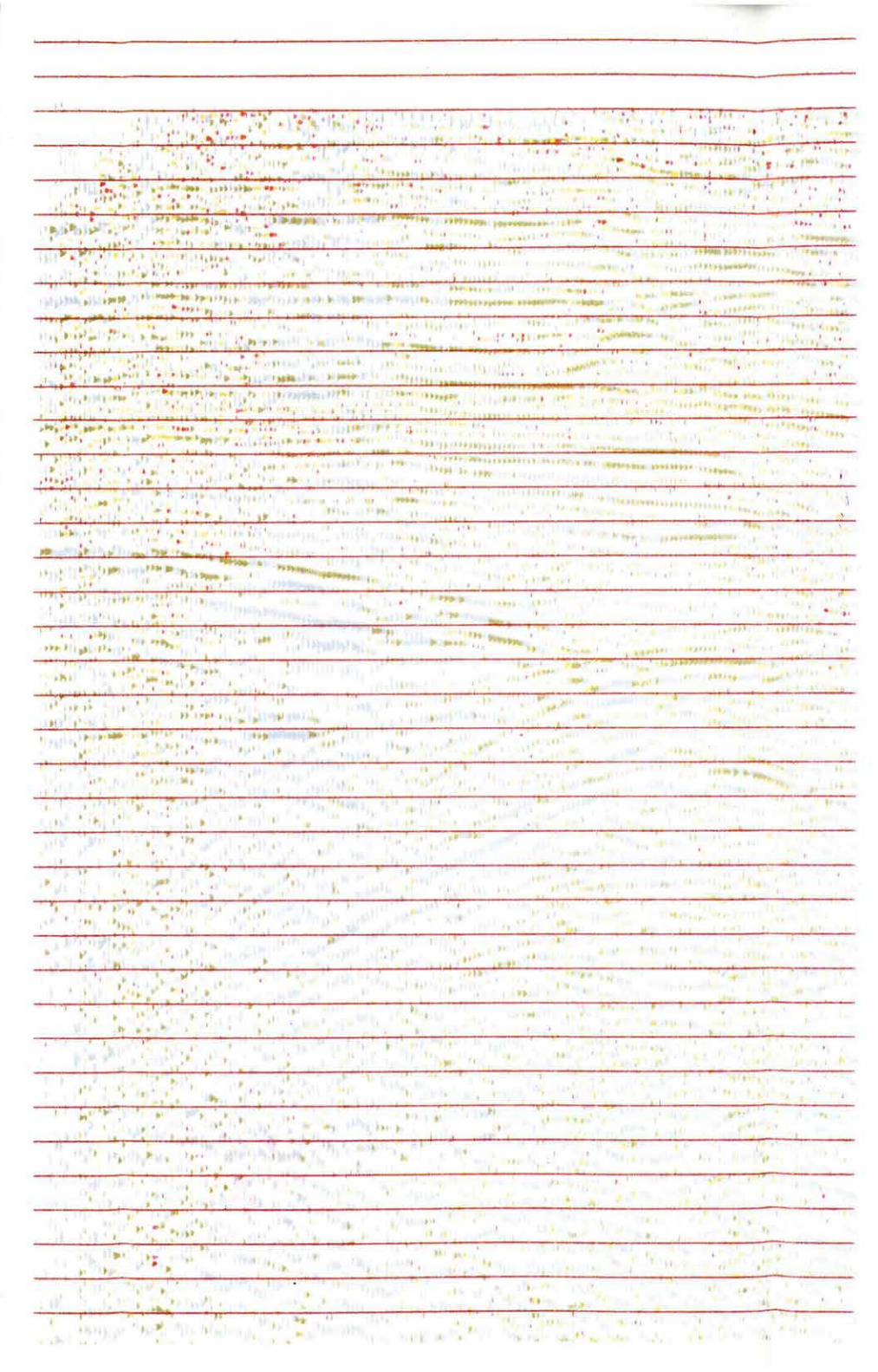


1. melléklet A V6-16/75 jelű időszelvény részlete amplitúdónagyság szerinti színezéssel
színkulcs: kék 12 dB; zöld 12-24 dB; sárga 24-36 dB; narancs 36-48 dB;
piros 48-60 dB

Plate 1 Detail of the seismic line V6-16/75 coloured in accordance with amplitude strength
colour key: blue 12 dB; green 12-24 dB; yellow 24-36 dB; orange 36-48 dB; red 48-60 dB

Приложение 1. Отрезок временного разреза профиля V6-15/75 с окраской по величинам





3. melléklet A V6-11/75 jelű időszelvény részlete látszólagos frekvencia szerinti színezéssel
színkulcs: kék 10-20 Hz; zöld 20-30 Hz; sárga 30-40 Hz; piros 50-60 Hz

Plate 3 Detail of the seismic line V6-11/75 coloured with respect to apparent frequencies
colour key: blue 10-20 Hz; green 20-30 Hz; yellow 30-40 Hz; red 50-60 Hz

Приложение 3. Временной разрез профиля V6-11/75 с окраской по величинам видимой
частоты

Условное обозначение: голубой цвет — 10—20 гц; зеленый — 20—30 гц;
желтый — 30—40 гц; красный — 50—60 гц

1

1. The first part of the document discusses the importance of maintaining accurate records of all transactions. It emphasizes that every entry should be supported by a valid receipt or invoice to ensure transparency and accountability.

2. Furthermore, it is crucial to review these records regularly to identify any discrepancies or errors. This process helps in maintaining the integrity of the financial data and allows for timely corrections.

3. In addition, the document highlights the need for clear communication between all parties involved. Regular updates and reports should be provided to keep everyone informed about the current status and any potential issues.

4. Finally, it is recommended to use standardized formats and templates for all documents. This ensures consistency and makes it easier to compare and analyze the data across different periods and departments.

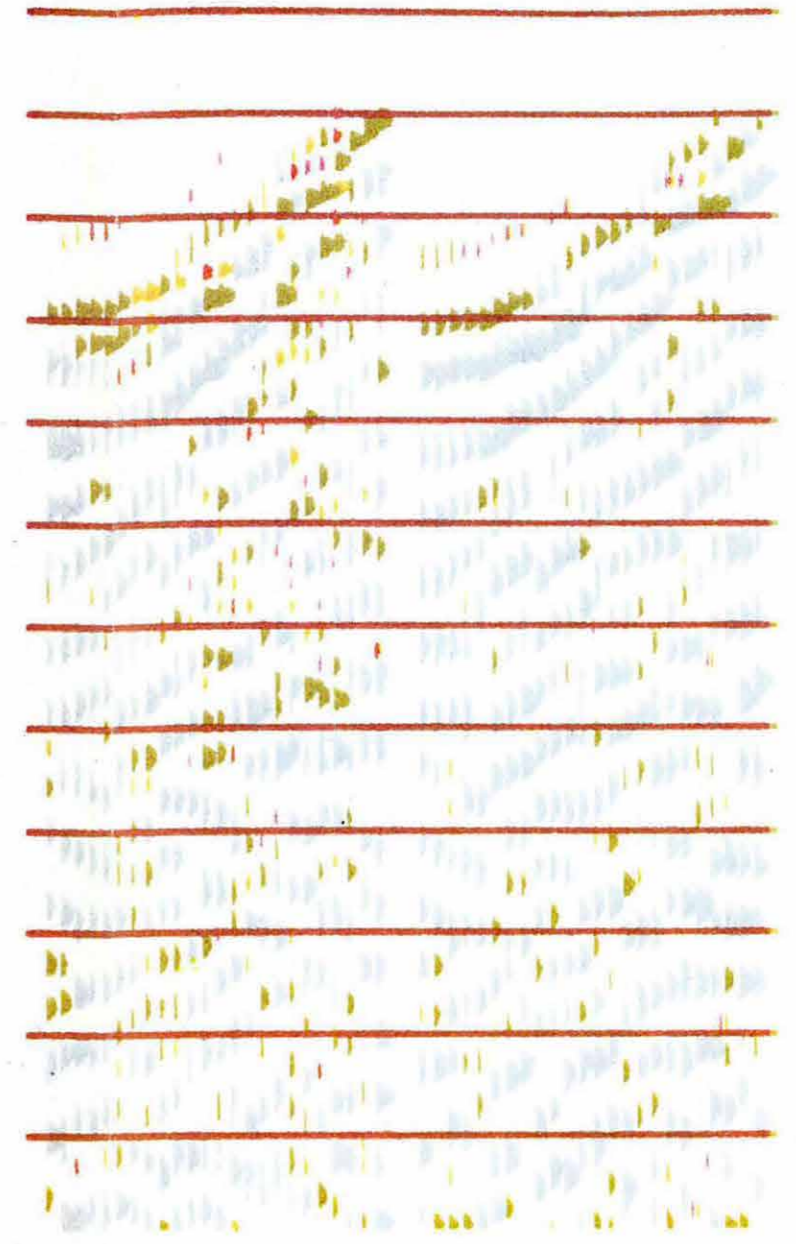
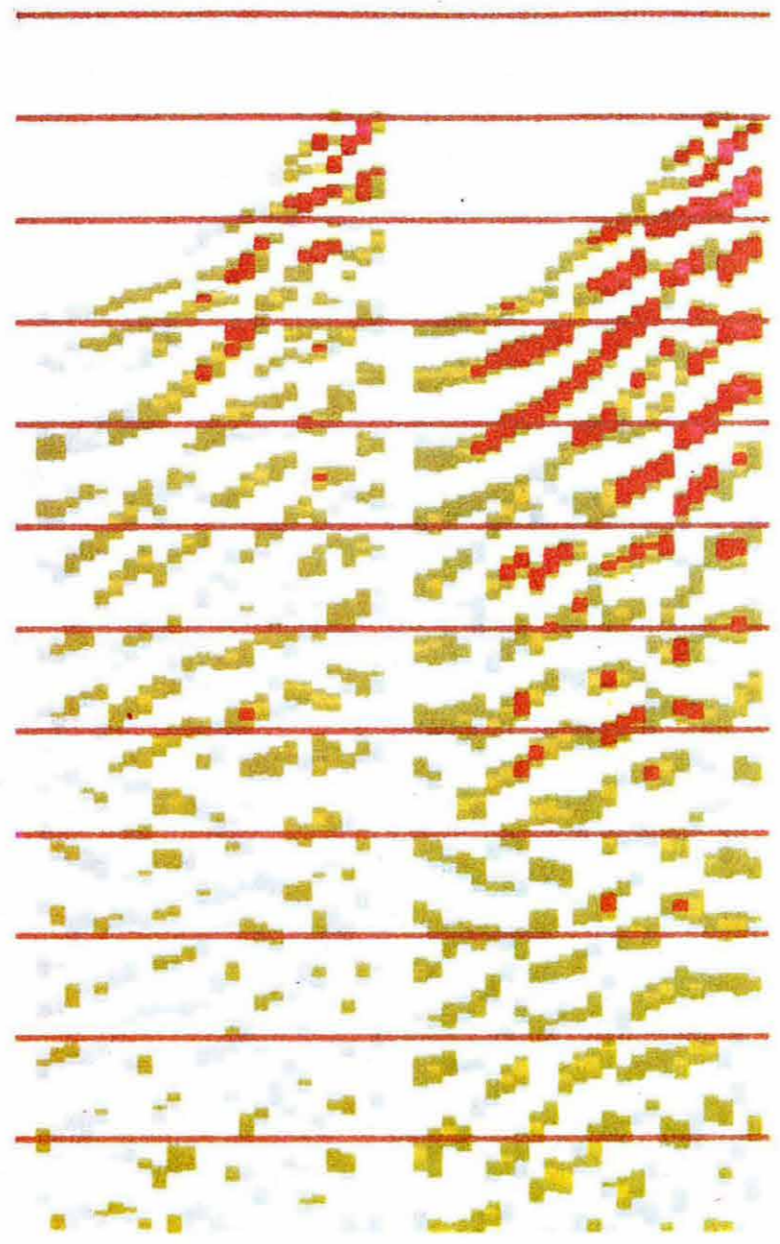
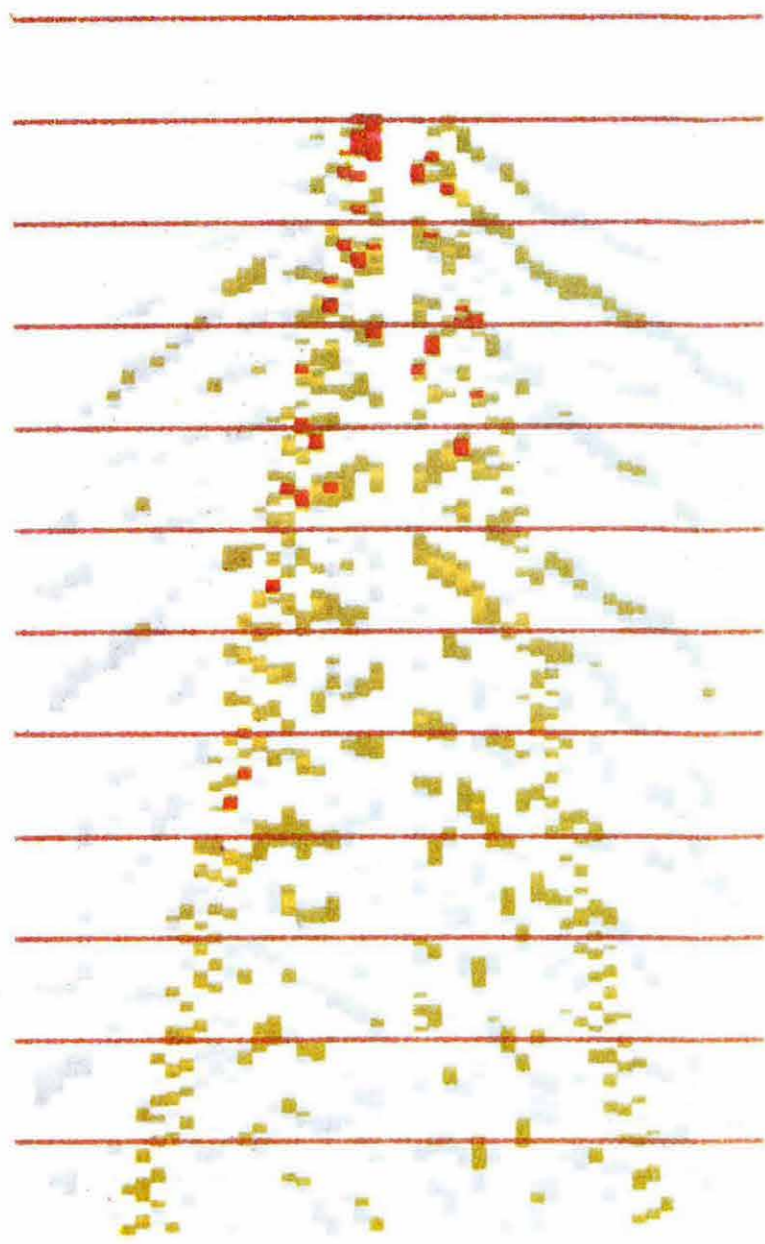
4. melléklet A V6-16/75 jelű id6szelvény r6szlete, a k6tf6le polarit6s k6t szinnel val6 meg-
jelenit6se

Plate 4 Detail of the seismic line V6-16/75, positive and negative polarities represented by two
different colours

5. melléklet A V6-16/75 jelű szelvényen készült velocity scan amplitúdónagyság szerinti színezéssel és 24 csatornára számított koherencia kitérésével; a sebesség változása 2000—3600 m/s, 200 m/s lépésekben

Plate 5 Constant Velocity Scan performed on the seismic section V6-16/75, coloured with respect to amplitude strength. The right-hand-side represents coherencies computed for 24 traces. Velocity changes from 2000 m/s to 3600 m/s in 200 m/s steps

Приложение 5. Резервка по постоянным скоростям по сейсмическому разрезу V6-16/75 с окраской в соответствии с величинами амплитуд; направо представлены величины когерентности, подсчитанные для 24 каналов; изменение скоростей в диапазоне от 2000 до 3600 м/сек в ступенях 200 м/сек



6. melléklet Refrakciós felvételek amplitúdónagyság és látszólagos frekvencia szerinti színezéssel
Plate 6 Refraction records coloured with respect to amplitude-strength and apparent frequency
Приложение 6. Сейсмические записи КМПВ с окраской по величинам амплитуд и видимой частоты

