

MASTER IN LANDSCAPE ARCHITECTURE AND GARDEN DESIGN (MA)

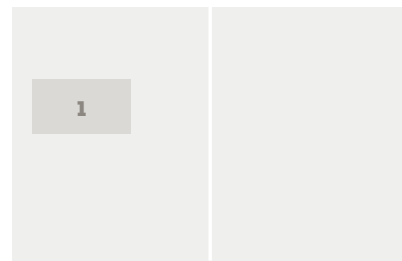


Fig. 2: The sitting benches in the sitting area



OPEN SPACE DESIGN OF ARNOS SQUARE AND AL SALHEIEH PROMENADE "DAMASCUS, SYRIA"

Author: Huda Khaddor

Supervisor: Dr Sárospataki Máté

The use of public open spaces in some Syrian cities has undergone great changes in recent decades. Through the commercial and cultural opening of the country, the number and variety of outdoor functions has also increased. The aim of this thesis is to develop one of these open spaces with regard to the importance of historical background and the needs of users.

Arnos Square is one of the most significant squares of Damascus as an important joint for the traffic, pedestrians and open spaces. The existing outdated, time-worn, characterless square needs to be reordered, renewed and developed. The aim is to make a landscape design for the Arnos square and promenade. To make character and reflect

more to the surrounding (in connection with the promenade) historic value, the old architectural heritage. Therefore it asserts that a redesigned landscape for the mentioned square should be treated as a potential development, emphasizing the historical value for Damascus, the square and the promenade itself as a main junction in the city fabric. There always were several expectations towards the square and the promenade during their history, it had to serve Transportation, commercial, and urban use and culture aspects. Providing open space for different events. It's considered as a Historical major point for tourists and locals. The first district that built outside the fence of old city for special users only. The square has a very important and a critical location, linked by the promenade. Arnos Square is one of the central squares of Damascus. Whenever the local people use it to take a rest after a long walking in the old city

and even after doing shopping from the shops in al salheieh promenade. Arnos square definitely one of the most significant squares of Damascus as an important joint for the traffic, pedestrians and open spaces. The northern part of the square is covered by a green surface, to the southern there is a huge parking lot, in the center the statue of the president Hafez Al Assad, a water fountain near the entrance of the promenade and the tree pits had put in an alternately through the promenade. In addition to the forbidden kiosks in all the area. Based on the previous analysis on the square and the promenade, it's possible to find the point of each new function which would be added to the square and the promenade. The different types of furniture and elements are arranged in a way to have the maximum benefit of both the square and its promenade to invite the local people back to their own square and promenade after the real loss in their identity. ©

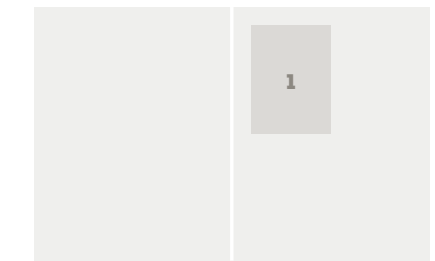


Fig. 1: The master plan 1

TONGLUOSHAN NATIONAL MINE HERITAGE PARK 'MINE SITE RESTORATION, LET THE EARTH SCAR REBIRTH'

Author: Jin Mengying

Supervisor: Dr. Zsombor Boromisza

In recent years, with the development of Chinese cities, some key areas in the construction of urban-rural integration have left a large number of "scars" in the suburbs of the city due to early mining. The construction of Mine Park is the main form of mining wasteland management in China. Through the ecological restoration technology and landscape planning and design, the mining wasteland is studied, so as to provide the regeneration basis and conditions for the overall landscape transformation of the mining area.

This paper selects the most ornamental and relatively independent part of TONGLUOSHAN National Mine Heritage Park as the main design site.

First of all, from the beginning of the study, four successful similar cases

provide a variety of useful development strategies, as well as planning methods and experience that mining culture can learn from. Secondly, this paper makes assessment on two spatial scales. The paper analyzes the whole TONGLUOSHAN Mine Park on the macro scale and the design site on the micro scale. And the paper summarizes its advantages, disadvantages, opportunities and threats to provide support for further planning and design. Third, from the proposal, principles, future prospects, based on the identity of in-depth site analysis. Then the plan develops the abandoned mining land into a cultural hot spot where you can enjoy the unique mine landscape and experience its history and culture. The mine park will play a new role and activate the space after stopping mining resources. ©

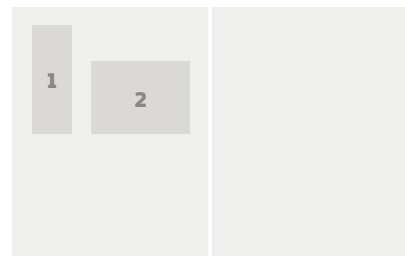


Fig. 1: Habitat analysis of the pilot area
Fig. 2: User interface design

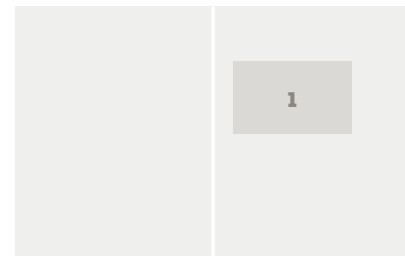
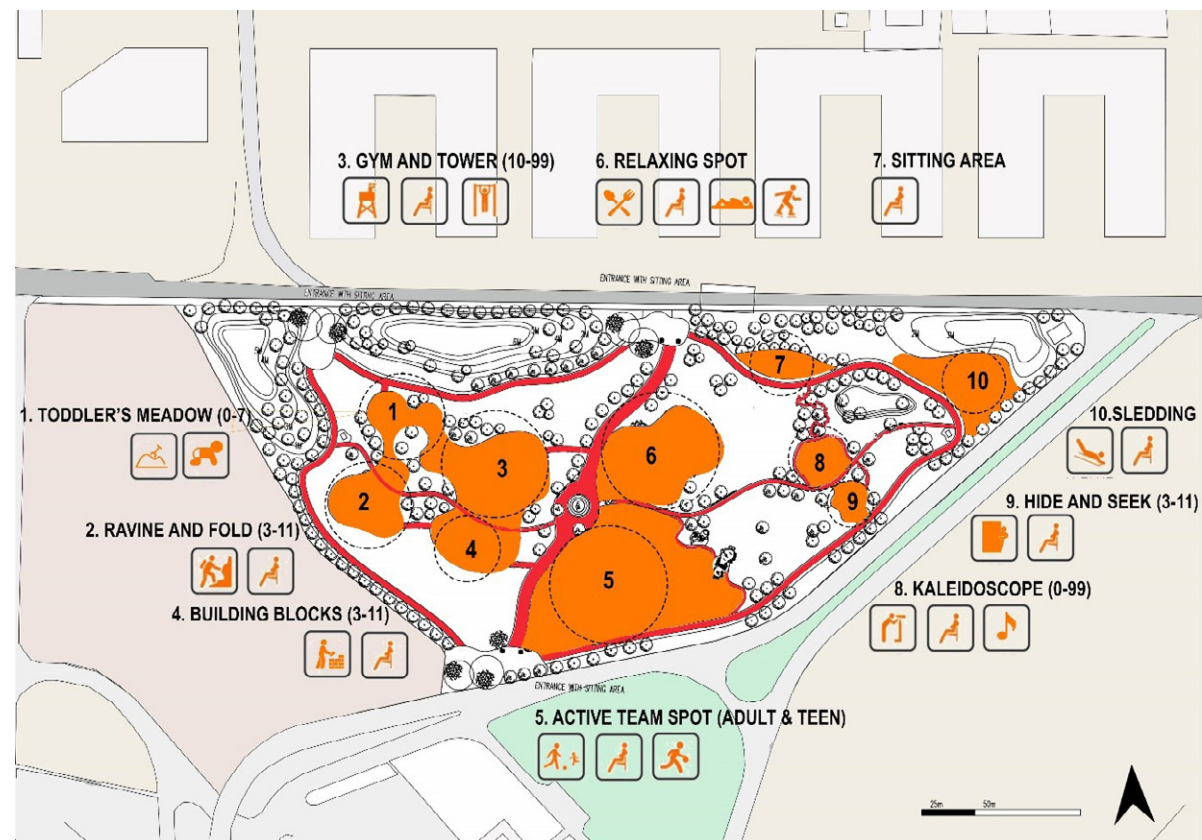


Fig. 1: Structure of park



DATA-DRIVEN PLANT APPLICATION

Author: Orsolya Lórik
Supervisor: Balázs Almási DLA, PhD

Plant application is a design task which is done by professionals and non-professionals as well. Typically, the decisions during the process are made relying mainly on experience and precedents by both groups. Although professionals are more likely to make good decisions thanks to specialized education and the knowledge on related literature, several bad examples of plantings can be found all around Budapest. In general, it can be stated that plants that are not doing well in a planting bed were not good choices or were not maintained well. Though, by wise planting designs these issues could be avoided.

According to personal observations in the vast majority of the plantings where plants suffer or even die, there was not enough attention paid at the daily mean duration of sunshine. This, in combination with a lack of knowledge

about plants, results in plantings which must be renewed yearly in order to fulfil the decorative demands. On the other hand, continuous unsuccessfulness can make people give up on gardening. The risk of this result has raised the motivation in finding a solution, which can be widely applied directly helping as many people as possible at once. Since the focus group of the diploma work are those people, who do planting design without professional qualification, the solution must also be tailored to them. Therefore, DDPA must include providing and analysing data of the habitat (roughly the place of the planting), listing plants that are ecologically appropriate for the chosen location and sharing information on an online, freely accessible platform.

Planting design is a challenging task, especially in urban areas, where abiotic factors are strongly influenced by anthropogenic factors, such as built infrastructure, air- and soil pollution, however, technical solutions

can make the process easier. A new method, named data-driven plant application has been worked out in order to help planting designers (professionals and non-professionals) in their planning process. The analysis of the potential data sources revealed that most of the requirements regarding datasets of plants and remotely sensed data of the environment are accessible and can serve the set goals. Due to the financial aims, the target area of the research was delimited in an approximately 1 km² large pilot area, where the use of the tool was successfully demonstrated through 3 different focus areas.

Even though, the methodology of Data-Driven Plant Application can be a useful tool for professionals, further developments are essential in order to make it easier to use for the public. In this respect DDPA must go online and stay a free app to help effectively. ©

THE PUBLIC PARK DESIGN IN THE OUTSKIRTS OF ULAANBAATAR, MONGOLIA

Author: Nomin Enkhtamir
Supervisor: Dr. Bakay Eszter

Public parks can be of almost any size and configuration, but they have a clear and, civic purpose for public users. They provide important opportunities for reflection, entertainment, organized sports, recreational and civic activities, cultural events, education, and research.

Parks evolve in response to the prevailing understanding of the role of nature in the human experience. The design and management of parks are informed by urban planning practices, design approaches, recreation regimes, landscape conservation philosophies, and social interactions.

Parks are a real reflection of the quality of life of the community. They provide an opportunity to identify citizens and are a key factor in understanding the

quality of life in a society. Parks and recreation areas are said to be one of the most important factors in determining the viability of citizens.

Parks provide a gathering place for families, social groups, and people of all ages and economic statuses, regardless of their ability to pay the entrance fee.

In this case, the study area is located in the Ger zone. Redesigning this public space is important for the residents to be able to spend time properly, which will affect their lifestyle, from an esthetical point of view. This will in turn increase the life quality of the surrounding property development.

The objectives are ecological quality improvement through green spot development and increasing the social aspect in the studied area by providing well-designed public open spaces.

The objectives can be better defined by addressing the following aspects of the project: public space development and establishment of social and cultural needs.

According to public space development, this part is divided into 3 sections:

- © Improvement of the existing situation's condition.
- © Proper use of the abandoned area.
- © Demolishing the underused area. As well as establishing social and cultural needs by:
- © Improvement of health benefits of public green spaces by building exercise equipment and playground etc.
- © Providing comfort and a safe environment by fences, hills for severe climate condition's etc.
- © Giving identity to the park for everyone: we store all the details of our childhood in our memory – what we ate, what we had, where we went, as well as the surroundings of our home. So, I am trying to give them some identity of the park by applying exotic elements in the park. ©

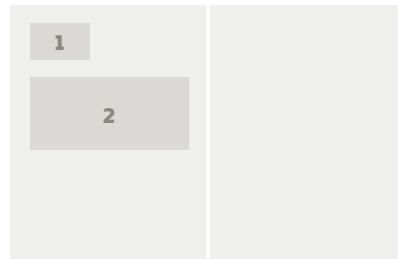
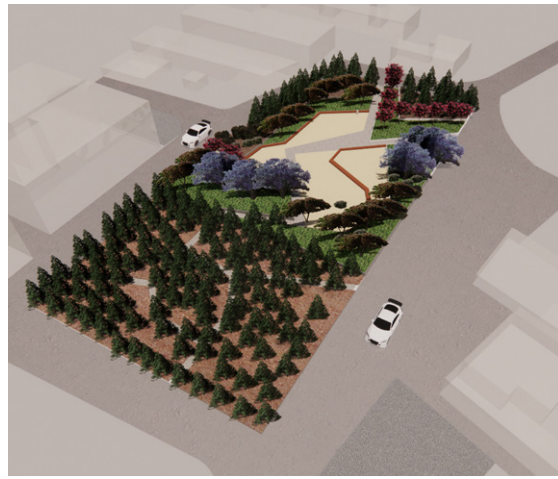


Fig. 1: Conceptual Design for a park in the sub-district
Fig. 2: Visualization (Park)

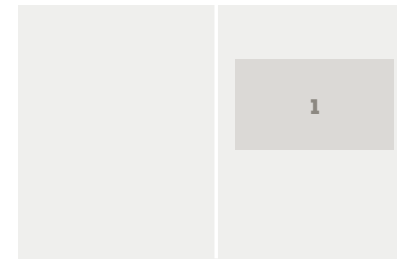
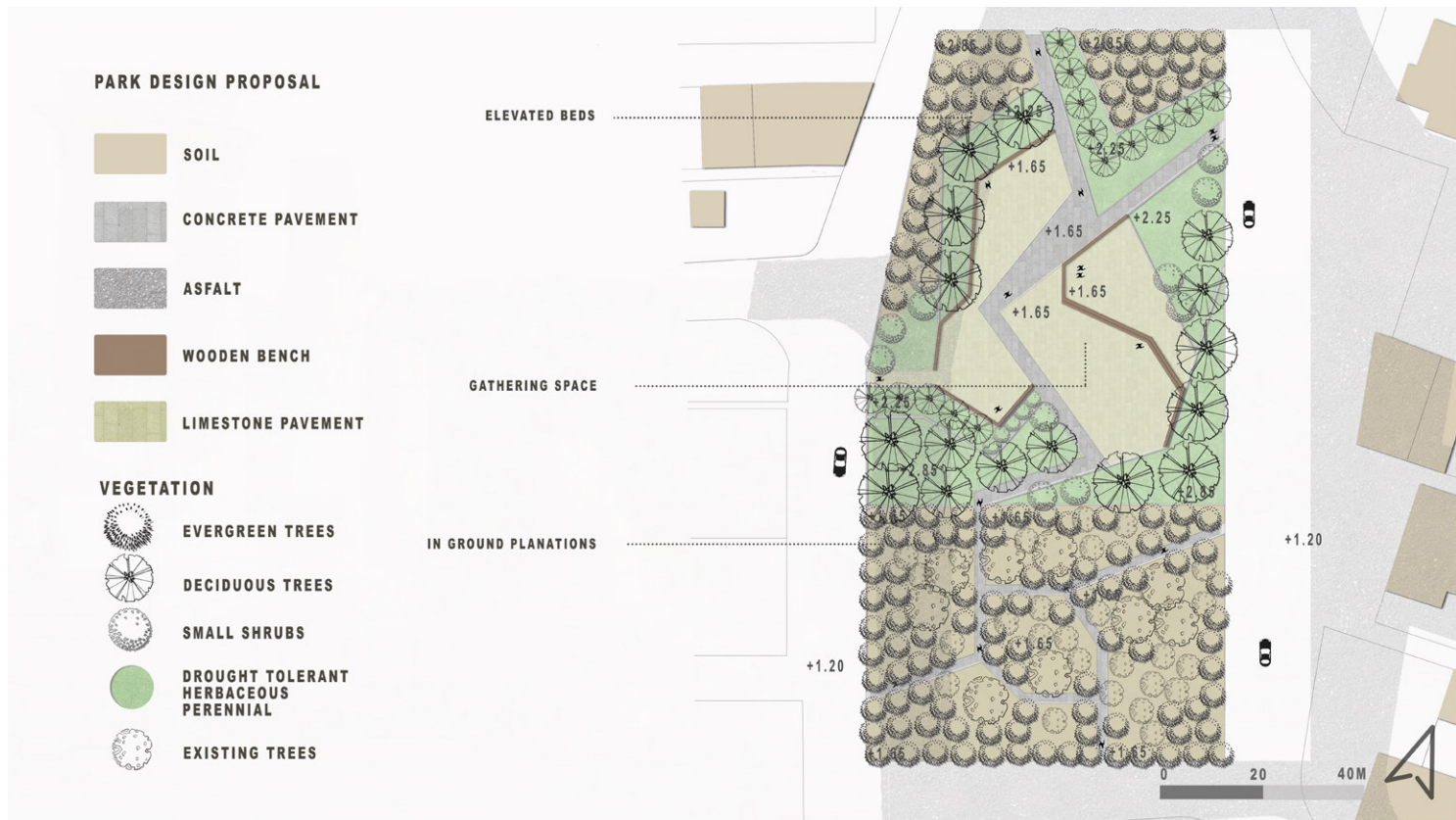
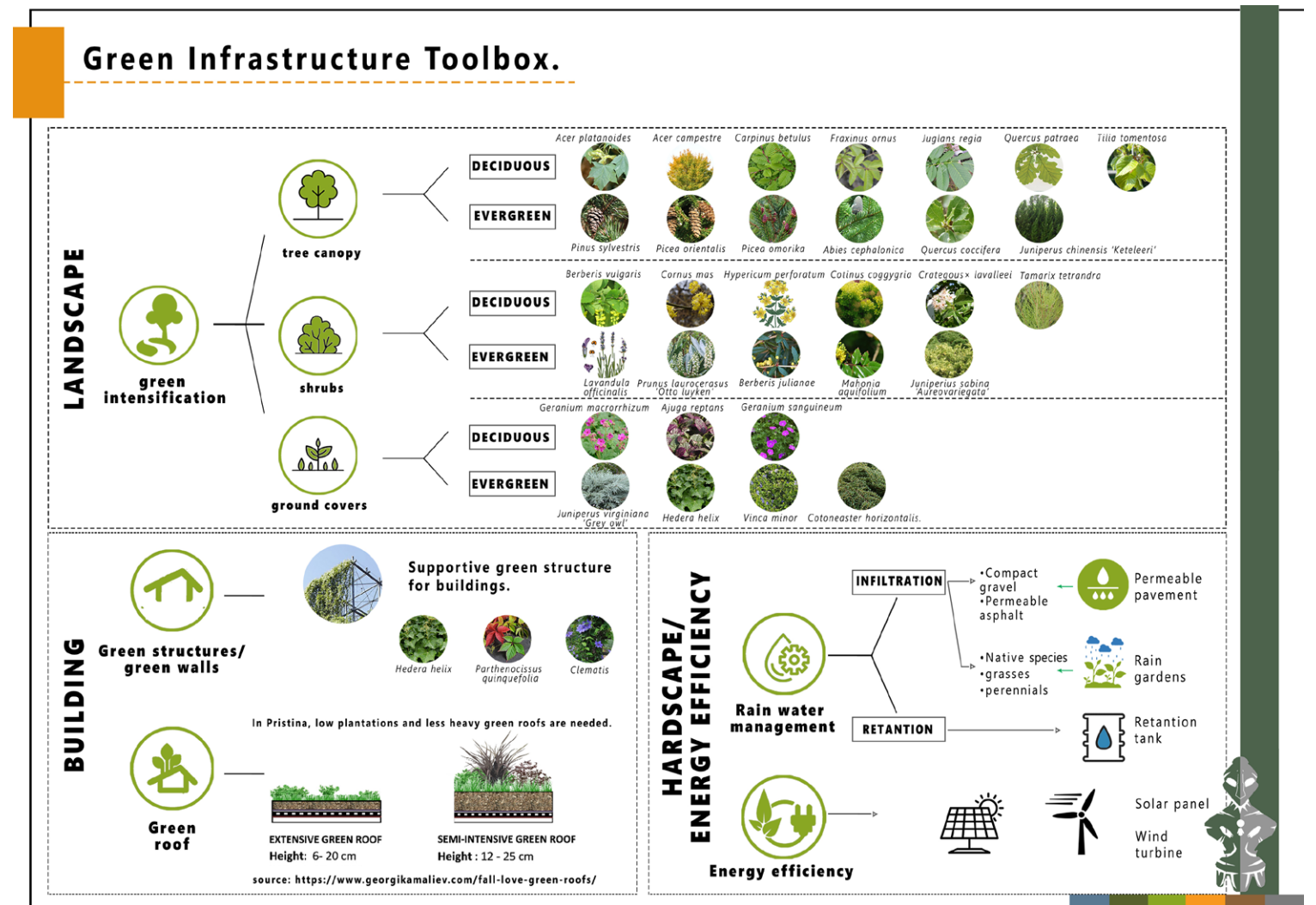


Fig. 1: Green infrastructure toolbox
Fig. 2: Six focus areas in Prishtina



THE POTENTIAL OF URBAN PUBLIC GREEN SPACES DEVELOPMENT, ABU NSEIR –AMMAN, JORDAN
 Author: Alghunmien Rawan
 Supervisor: Dr. Valánszki István

Amman is known as a place of attraction for many families in various parts of the surrounding countries and has played an enormous role in hosting a large number of refugees over the years. Today, the city suffers from urban expansion, air pollution, and the absence of green areas and recreational public spaces.

As a result, a study was conducted on a sub-district called Abu Nseir located in the northwestern part of Amman, the sub-district is known to be primarily a residential area with some commercial buildings that play a

major role in the area. The study is done to assess the potential for the development of urban public green spaces in the area taking into consideration the ecological and cultural aspects.

And in order to measure the effectiveness of the development proposals for the sub-district, few sites have been chosen to show detailed designs to meet the main objectives of the study.

CITIES BETWEEN GREY AND GREEN - HOW CAN GREEN INFRASTRUCTURE HELP CITIES DEAL WITH CLIMATE CHANGE? PILOT AREA: PRISHTINA, KOSOVO
 Author: Xhezide Vlashi
 Supervisor: Jombach Sandor

Climate change is affecting the whole world, causing problems at both global and local levels. The solution is a strategy to combat the effects of climate change through the implementation of green infrastructure. The effects that occur due to green infrastructure are beneficial, ranging from reducing CO₂ in the atmosphere, air purification, improving urban climate, increasing biodiversity, improving rain-water management to the enhancement of public health and quality of life.

Considering the layers of problems and solutions in cities, the next move was finding two exemplary cities that can make this study clearer. Like many other cities in the world, Ljubljana and Bratislava are facing the problems of climate change.

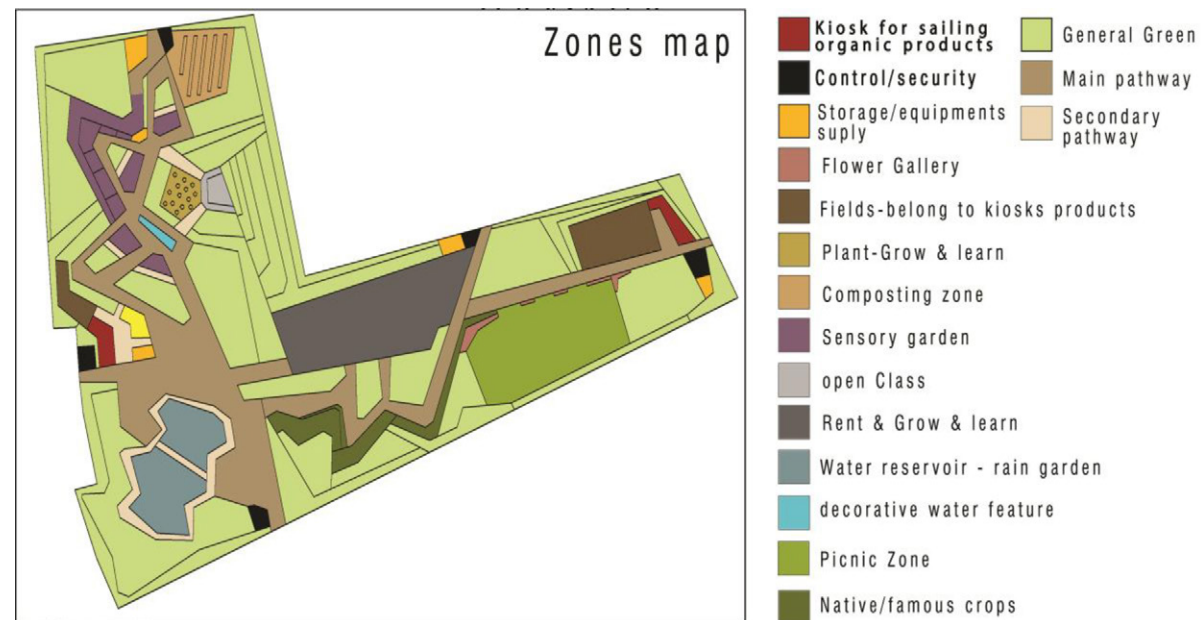
Since climate change has also affected people, I found it essential to get closer to this intangible issue; understand how they deal with this situation, or how education can be a supporting tool against climate change. And one of the ways to understand that was through a questionnaire made with the citizens of Prishtina.

The aim was to understand the environmental problems and their negative impacts on the city. Also, I expounded the positive elements that are worth

preserving and improving, such as the ecological areas. The thesis provides examples of green infrastructure implemented in the city based on the main environmental problems and the surroundings. Such proposals were specified in the six focus areas which are considered to be types of solutions or even types of battlefields that contribute to Prishtina in the fight against climate change.



Fig. 1: Master plan for the educational farming park



TOWARDS URBAN AGRICULTURE - A PROPOSAL FOR AN EDUCATIONAL FARMING PARK IN LATAKIA CITY

Author: Yara Mhrez
Supervisor: Anita Raith

Agriculture and cities have always been closely interwoven, and yet are often seen as contradictions. This relationship is reciprocal: © food supply to citizens; and © recycling of urban organic matter. The rural-oriented agri-food system, improved agricultural engineering, reduced transport costs and the globalization of markets have truncated long-established links between the city and its agricultural neighborhood.

The urban population expansion is more pronounced in developing countries as the result of rural-to-urban migration and natural population growth (FAO 2007; City Farmer 2011; FAO-FCIT 2011). Furthermore, the urbanization process brings indeed a wide range of unwanted consequences, which go from the reduction of fertile lands to deforestation, air and water pollution, reduced drainage of the rainfall, and the creation of peri-urban areas where socio-economic constraints are exalted and poverty is condensed.

This is, however, going beyond simple technical innovation and organizational improvement: Giving agriculture a role to play in food city supply is promoting diversification of crops and species, of farming and trading systems, and of consumption behaviors and habits. Such a diversification approach integrates linkages between rural and urban communities, combining sustainable production with responsible trade and consumption (FAO-FCIT 2011).

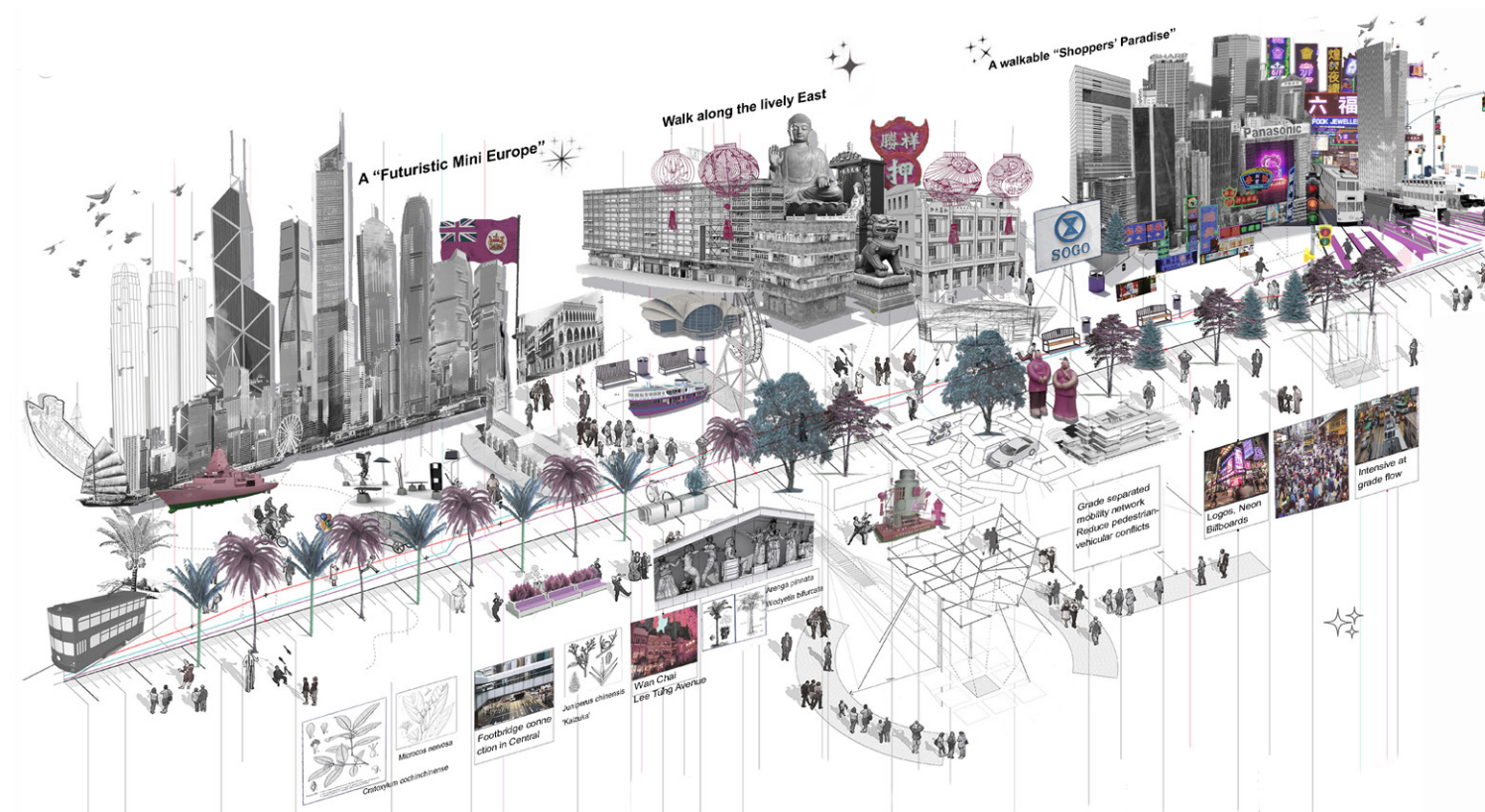
All this together put the landscape architects and urban planners under the responsibility to find better solutions and methods to have a better understanding and appropriate applications for this phenomena and science education is the first step of formation, by merging these two concepts education/urban agriculture can be also the first step towards creating a better performance for the city citizen in term of urban activities.

Which led us to the thesis aim of presenting a new concept of education farming park as a new term referring to new methods and process of educating urban citizen in the city and the young generation about farming methods and growing food in urban areas as the first step towards making cities produce food, through working on three levels:

1st level (general level) the focus is to clarify the difference between urban agriculture and urban farming, define the challenges and opportunities in urban farming and clarify the educational farming park concept.

2nd level (city-level/ Latakia city) the focus is to reach the principal barriers of urban agriculture as a broad implementation, study the accessibility to vacant land and tenure security, the viability of farming the city, and to study the consumer lifestyle.

3rd Level (design site level) the focus is to increase the value of agricultural lands by saving the highly valuable ones in the agglomeration areas, to bring back/preserve the identity of place (cultural identity), to increase urban biodiversity, to improve the community connection and integrate people who are migrant from the countryside to the city and settling down in the newly developed area in the suburb and to improve the youth development because education is the first step of formation. ©



A PEOPLE-CENTERED APPROACH TO THE CONSTRUCT OF PLACE IDENTITY - AN EMPIRICAL STUDY OF HONGKONG FEATURES: PEDESTRIAN ENVIRONMENT

Author: Zhu Zhu
Supervisor: Fekete Albert

This research stems from the concerns about social identity issues in Hong Kong and the increased homogeneity in the high-rise, high-density cities as globalization and technological innovation occur. Place-based experiences are altered due to the transformations in mobility supported by transportation systems and ICT technology. Special attention should be paid to the central business districts (CBD) as they provide a prevailing and dominant role as the central places of the cities.

This study aims to put users at the center of the issue and investigate the interplay of people, pedestrian environment, and place identity in CBD areas in Hong Kong through historical research, morphological analysis, and

structured interviews, then help to form place identity taking the walking environment as a design median. The research confirmed that walking is the most direct body-space experience, and place identity is conceived by people through their embodied spatial experiences; it found that the quality and visual consistency of the pedestrian environment alters people's perception towards the collective places. Not only did this study pointed out the importance of a people-oriented place-making approach, but also provided solutions for the designing of the pedestrian environment through an extended interpretation of "Place Identity" in a dynamic way. ©

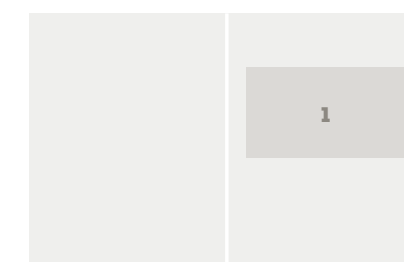


Fig. 1: Prioritize The Pedestrians